

Test Monitoring Center Report

- ▶ June 27, 2016
- ▶ Bellevue, WA

Test Monitoring Center
<http://astmtmc.cmu.edu>



2016 Matrix Programs

- IIIH – Completed
- IVB – 2016 Start
- VH – 2016 Start
- VIE – Completed
- VIF – Completed
- Chain Wear – Completed
- LSPI – Completed
- GMOD – Completed
- PC11 VGRA – Completed
- Anticipate several GF-6 VGRA Matrices

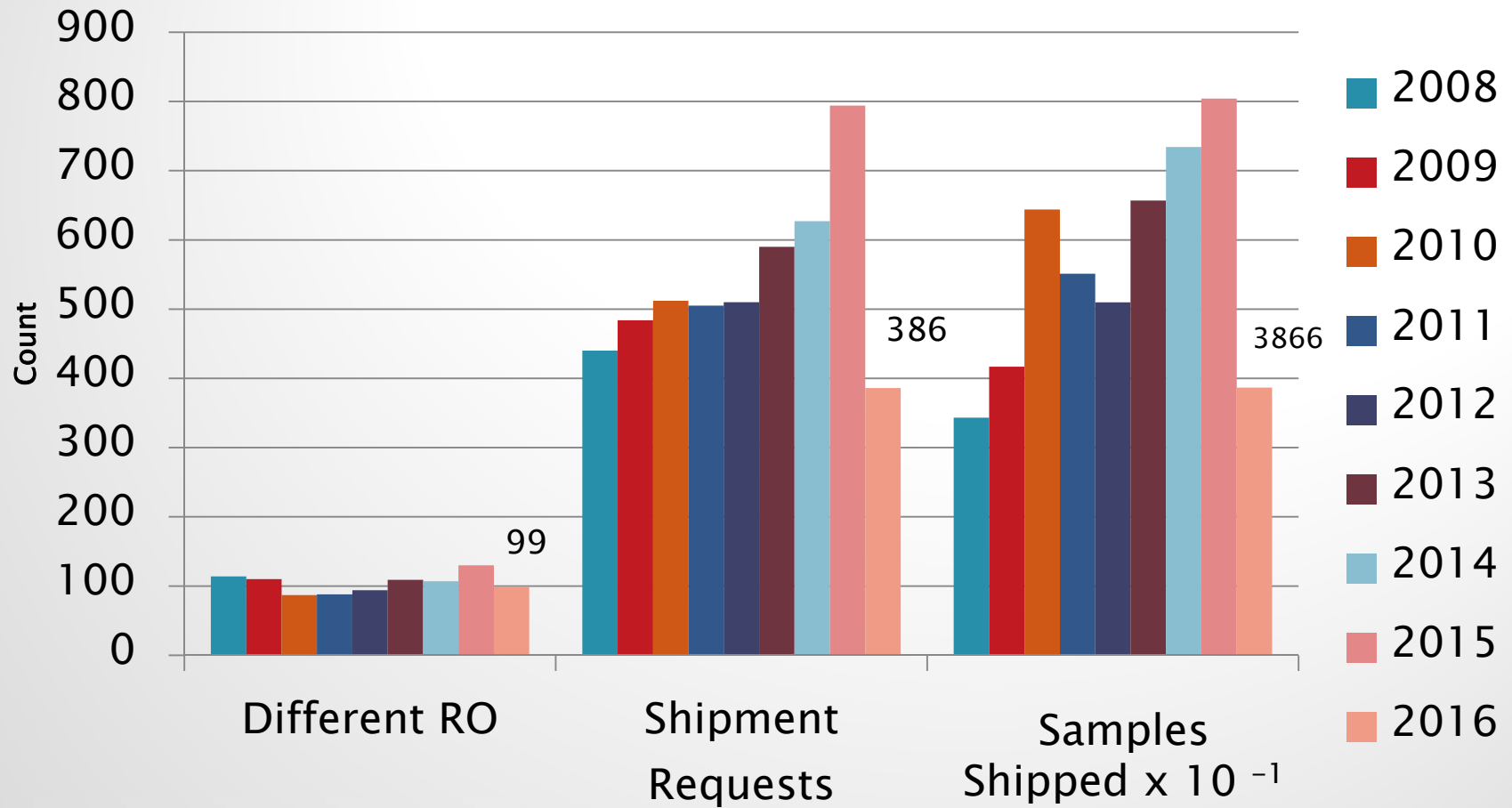
12 Information Letters Passed Sub B Ballot

Test Area	No.	Issued	Subject
VG	15-2	20151104	Cam Bearing Change
1N	15-3	20151228	Change in TGF Reporting
IIIG	16-1	20160201	Additional Cleaning to Allow Reuse of Fuel Injectors
IIIF	16-1	20160203	Additional Cleaning to Allow Reuse of Fuel Injectors
IIIF	16-2	20160208	Correction to Spark Plug Number in Table A5.1
ROBO	16-1	20160311	Numerous Revisions
T-12	16-1	20160314	Updated VUYP Hardware Correction Factors and New Delta Lead Correction Factors
ISM	16-1	20160324	Test Number Correction
L-37	16-1	20160331	Requirements for using lab-assembled axle units
ISB	16-1	20160407	Changes to ISB Wear Parameter Reporting
ISM	16-2	20160407	Changes to ISM Wear Parameter Reporting
T-13	16-1	20160422	Viscosity Increase @ 40 °C Final Minimum Value

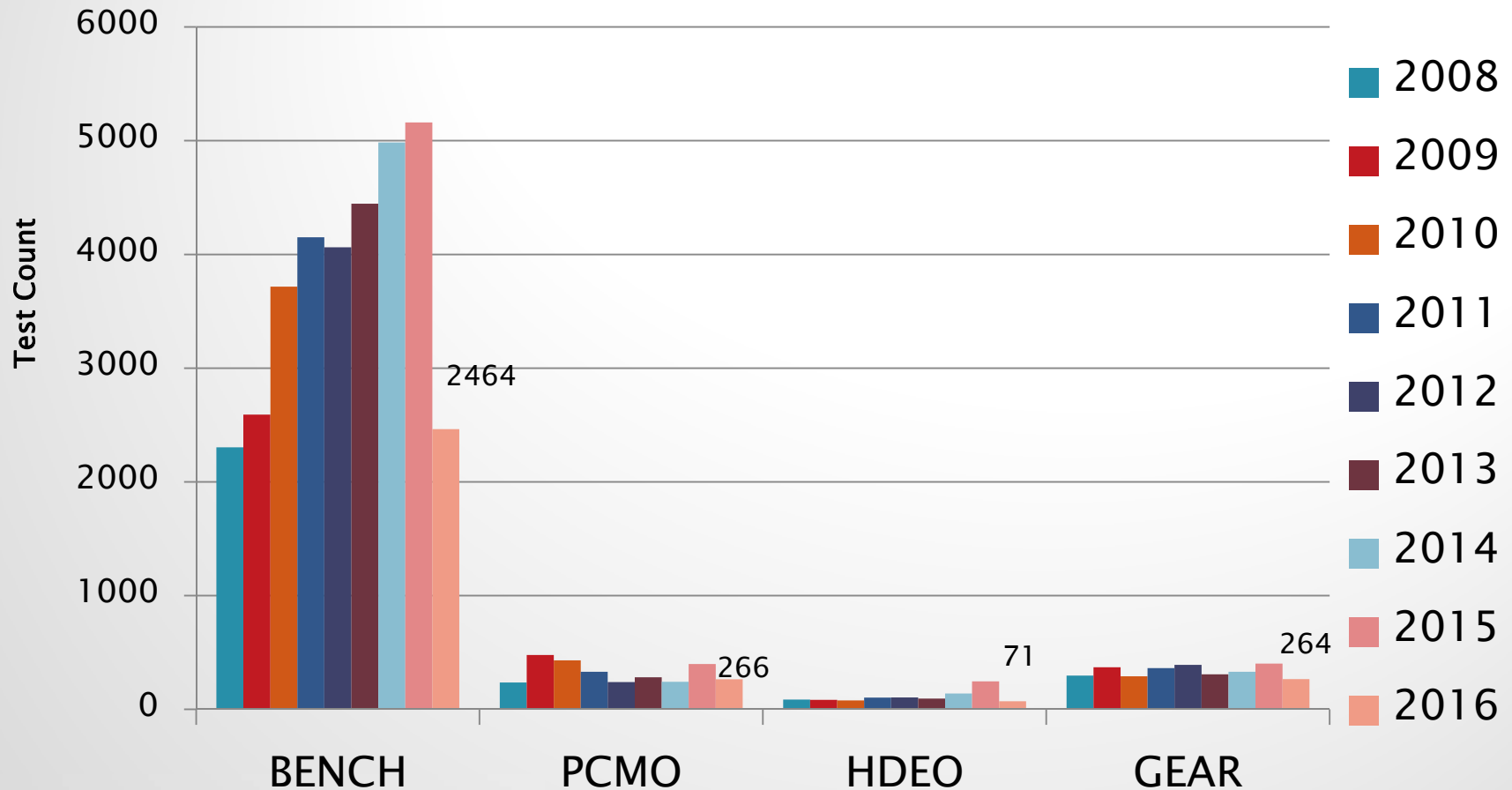
Reference Oil Procurement

Type	Oil Code	Quantity (gallons)
Jet Fuel Lubricity	JFA4/JFB4	100
DD13	866 / Oil C	340
	864 / Oil X	1710
VIE	VIEBL5	10000
	VIEFO5	3245
GMAER	GMAERBL	530
	GMAER02	330
GMVFE	GMVFEHR01	1080

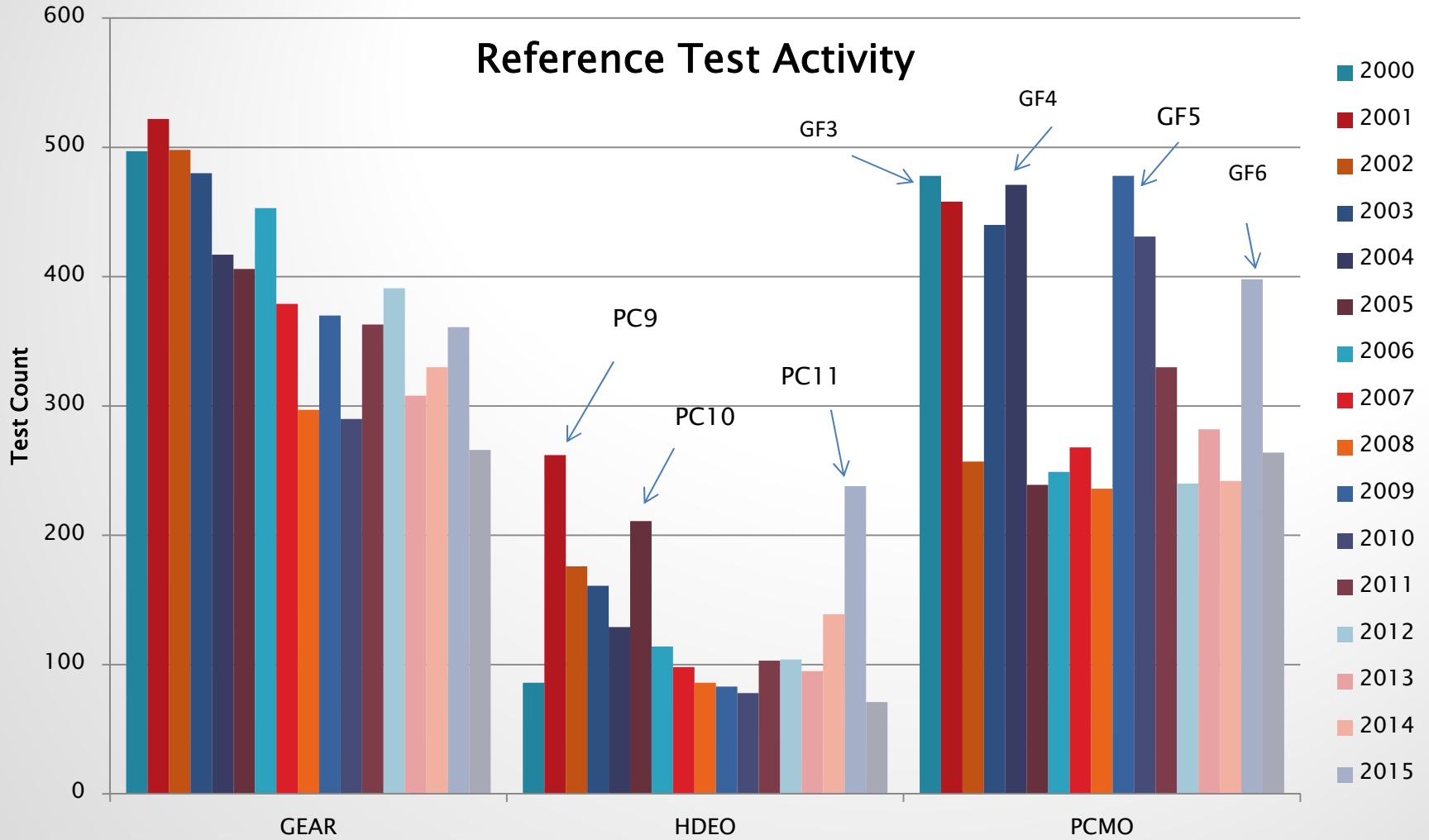
Reference Oil Shipment Overview



Reference Test Activity



Reference Test Activity



1006-2 Status

- ▶ TMC Inventory of 1006-2 is at 2475 gallons
 - It can not be re-blended
- ▶ 1.5-year usage
 - SF105 465 gallons
 - Specified in ASTM D471 & GM Standards
 - EOEC/LDEOC 645 gallons
 - IVA/VG/VIII 549 gallons
 - Total 1659 gallons
 - BRT uses 1006 blend (plenty in house)
- ▶ Estimated Life ~18 months

Deposit Rater Workshop Meeting

- ▶ TMC held a Deposit Rater Workshop Meeting on June 14 in Pittsburgh
 - Attended by 10 companies
 - Engineering, lab and field raters in attendance
 - Discussed workshop format
 - Semi-annual vs. annual
 - Lab, field and untrained rater participation
 - Rater training component
 - Target setting process

Workshop Open Discussion

▶ Proposed format

- A single, combined annual LD & HD workshop.
- ASTM TMC calibrated (RWB in last 12 months) lab raters attend 1st session
 - One calibration piston is used to bring raters together before official rating starts
 - Generate target means and standard deviations on all parts through discussion
 - Parts are divided into groups and rated by session 1 raters to enable all parts being rated

Proposed format continued

- Session 1 ratings are screened with one pass of E178
- Means and standard deviations are then locked
- One rater from each lab stays and provides training for second group of non-lab raters.
- Session 2 raters rate and discuss same calibration piston before official rating starts.
- Session 2 raters are shown session 1 calibration piston results after their rating of part.
- After training session non-lab raters rate same parts to fill workshop database

Fluorescent Lighting Issues

- ▶ Currently, the industry uses these fluorescent lamps for rating:
 - ▶ - FC8T9–CW (“round” fixture)
 - ▶ - F15T8–CQ (“two–bulb” fixture)
- ▶ Due to Federal regulations, fluorescent lamps are going off the market.
- ▶ For some labs, breaking a fluorescent lamp is a significant problem, due to the mercury content, requiring a full “Haz–Mat” response.

European use of LED lighting

- ▶ The European CEC Rating Method specifies the use of LED light fixtures.
- ▶ At least two of the fixtures allowable for use in the CEC method are manufactured by Waldmann Lighting.
 - ▶ - Tevisio (round fixture)
 - ▶ - Taneo (“two bulb” fixture)

Lighting Task Force

- ▶ The group felt a lighting task force needed to be formed to evaluate LED light source to replace the current lights.
 - Jack Kobrinetz (Afton) volunteered to lead a task force to evaluate LED lighting replacements

Workshop Group Formation

- ▶ Attendees felt a group needed to be formed to provide oversight of rater workshops and rating aids (manuals, sludge depth gauges, lighting, etc.)
 - Propose a permanent group be formed under the Technical Guidance Committee



A Program of ASTM International