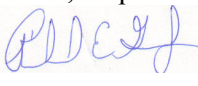




Test Monitoring Center

6555 Penn Avenue
Pittsburgh, PA 15206-4489
(412) 365-1000

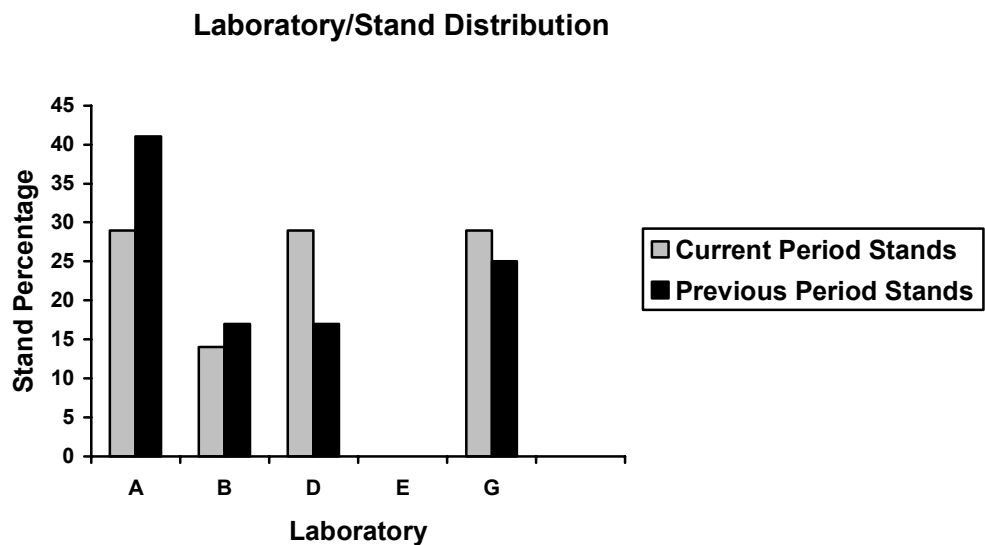
MEMORANDUM: 05-069
DATE: October 19, 2005
TO: Andrew Ritchie, Chairman, Sequence VG Surveillance Panel
FROM: Richard E. Grundza 
SUBJECT: Sequence VG Reference Test Status from April 1, 2005 through September 30, 2005

The following is a summary of Sequence VG reference tests that were completed during the period April 1, 2005 through September 30, 2005.

Lab/Stand Distribution

	Reporting Data	Calibrated as of 9/30/05
Number of Laboratories	4	4
Number of Stands	7	6

The following chart shows the laboratory/stand distribution:

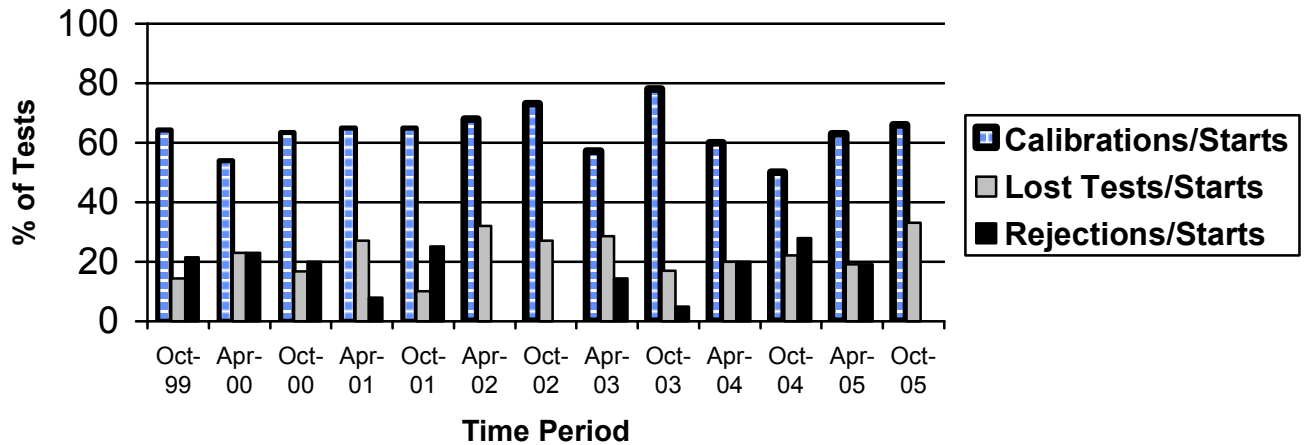


The following summarizes the status of the reference oil tests reported to the TMC:

	TMC Validity Codes	No. of Tests
Operationally and Statistically Acceptable	AC	6
Operationally Invalid, Lab Judgment	LC	4
Acceptable Fuel Approval Test	AF	3
Total		13

Calibrations per start, lost tests per start and rejections per start rates are summarized below:

Calibration Attempt Summary



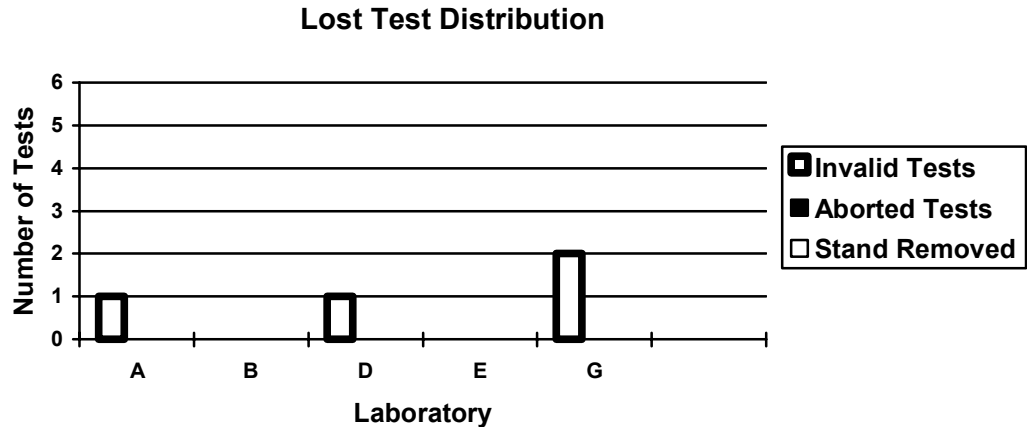
The calibration per start rate has increased slightly with respect to the previous period and compares well with the historical rate. The lost test per start rate has increased with respect to the previous period and compares well with historical rates. There were no rejected tests this period

There were no LTMS deviations written during this report period. A total of six LTMS deviations have been written to date.

The following table lists the reasons for operationally invalid and aborted tests this period.

Reason	Number of Tests
Lost test data	1
Incorrect initial oil level	1
RAC flow	1
Bad coolant temperature sensor, lambda out of spec	1

Aborted and operationally invalid tests by laboratory are summarized with the following chart:



Severity and Precision

Based on the mean delta/s values and pooled standard deviation for the current period, 95% confidence intervals representing severity for the current period are given below in reported units.

<u>Variable</u>	<u>Pooled s</u> <u>All Oils</u>	<u>Mean</u> <u>Delta/s</u>	<u>Confidence</u> <u>Interval</u>	<u>Based</u> <u>on</u>	<u>Delta in</u> <u>Reported</u> <u>Units</u>
RAC	0.446	0.189	7.62 - 8.55	8.0	0.08
AES	0.403	0.016	7.39 - 8.23	7.8	0.01
APV	0.280	-0.183	7.15 - 7.74	7.5	-0.05
AEV	0.094	-0.520	8.56 - 9.14	8.9	-0.05
OSCR	0.059	-0.014	18.7 - 22.3	20	-0.02

The mean Δ/s for this period shows AEV (-0.52) and APV (-0.183) were severe, while RAC (0.189) was mild and AES (0.016) and OSCR (-0.014) were on or near target. Figures 1 through 5 are current industry severity and precision EWMA control charts and plots of summations Δ/s for AES, RAC, AEV, APV, and OSCR.

Industry control charts for AES show that severity and precision were in control the entire period. The industry summation Δ/s plot for AES shows severity on or near target for the period.

RAC severity and precision charts were in control for the period. The industry summation Δ/s plot for RAC shows severity trended slightly mild for the period.

Industry control charts for AEV severity and precision were in control the entire period. The summation Δ/s plot for AEV reflect a slight severe trend during the period.

Industry control charts for APV severity began the period with a severity EWMA warning alarm, but came into control limits for the remainder of the period. Precision was in control for the period. The summation Δ/s plot for APV shows a severe trend for the period.

OSCR severity and precision were in control the entire period. The summation Δ/s plot for OSCR shows OSCR trending on or near target for the period.

Figures 6 and 7 chart the pooled precision estimates for all monitored parameters, by ASTM report period. Comparison of precision estimates between this period and other periods is not practical, due to the limited number of tests on a variety of oils. Figure 6 shows the precision estimates for AES, RAC and OSCR for this period and previous periods. Figure 7 shows precision estimates for AEV and APV for this period and previous periods.

The following table compares the standard deviation used in the LTMS for severity adjustment calculation, which is a pooled estimate of precision based on oils 1009, 1006, and 1007, with the current pooled precision of the oils 1006, 1007, and 1009.

Parameter	Severity Adjustment Standard Deviation (n = 120)	Pooled Standard Deviation, Oils 1006, 1007 and 1009 (n = 4)
AES	0.45	0.52
RAC	0.25	0.17
AEV	0.10	0.07
APV	0.20	0.21
OSCR	0.793	0

Fuels and Reference Oils

Reference oil quantities available at the laboratories and TMC as well as estimated life of these oils, are tabulated below.

Oil	TMC Inventory, in gallons	TMC Inventory, in tests	Laboratory Inventory, in tests	Estimated life
925-3	128	42	4	3 years
1006	0	0	2	< 1 year
1006-2	4697	1565	6	3+ years
1007	441	147	3	3+ years
1009	788	262	3	3+ years

Note: Oils 1006, 1006-2, 1007 and 1009 are used across multiple test areas, TMC inventory represents total amount of that oil on hand.

Information Letters

Information Letter 05-1 was issued June 1, 2005. This information letter deleted the requirement to determine follower wear and ring gap increase, clarified the rating of oil screen clogging, updated the precision statement, added limits for lost test data and addressed a number of editorial changes relating to hazard statements. Information Letter 05-2 was issued July 19, 2005. This letter approved the use of fuel batch TA1921LS15, and added correction factors for AES, RAC, AEV and APV to be applied when this batch is used. Information Letter 05-3 was issued July 26, 2005. This information letter addressed a change in the fuel batch designation that was made by the supplier, batch TA1921LS15 has been changed to TF2221LS20.

Information Memos

The following memos were issued by the TMC during this period.

<u>Memo</u>	<u>Date</u>	<u>Subject</u>
05-009	04/09/05	Sequence VG Semi-Annual Report
05-025	05/02/05	Target Update, Reference Oils 925-3 (n=26)

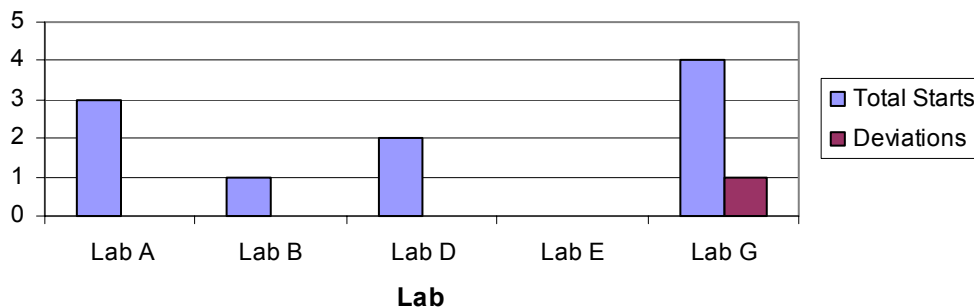
Laboratory Visits

During this report period, there were four TMC lab visits conducted.

QI Deviations

There was one QI deviation reviewed by the Test Monitoring Center for this report period. This QI deviation was for intake air humidity below 0.000.

**Sequence VG
Summary of Test Starts and QI Deviations by Lab**

Summary

The calibration per start rate has increased with respect to the previous period and compares well with historical rates. The lost test per start rate has increased with respect to the previous period and compares well with historical rates. There were no rejected tests this period. AEV and APV were severe, while RAC trended mild for the period. AES and OSCR were on target for the period. Comparison of precision estimates between this period and other periods is not practical, due to the limited to the limited number of tests on a variety of oils.

REG/reg

Attachments

c: Sequence VG Surveillance Panel

J. L. Zalar

F. M. Farber

<ftp://ftp.astmtmc.cmu.edu/docs/gas/sequencevg/semiannualreports/vg-10-2005.pdf>

Distribution: Email

Listing of Tables and Figures Included as Part of This Report to the Sequence VG Surveillance Panel

Figures 1 through 5 are the Industry control charts for AES, RAC, AEV, APV and OSCR.

Figures 6 and 7 compare pooled precision estimates from this report period with previous periods.

Figure 8 is the Industry Timeline.

SEQUENCE VG INDUSTRY OPERATIONALLY VALID DATA Figure 1

AVERAGE ENGINE SLUDGE

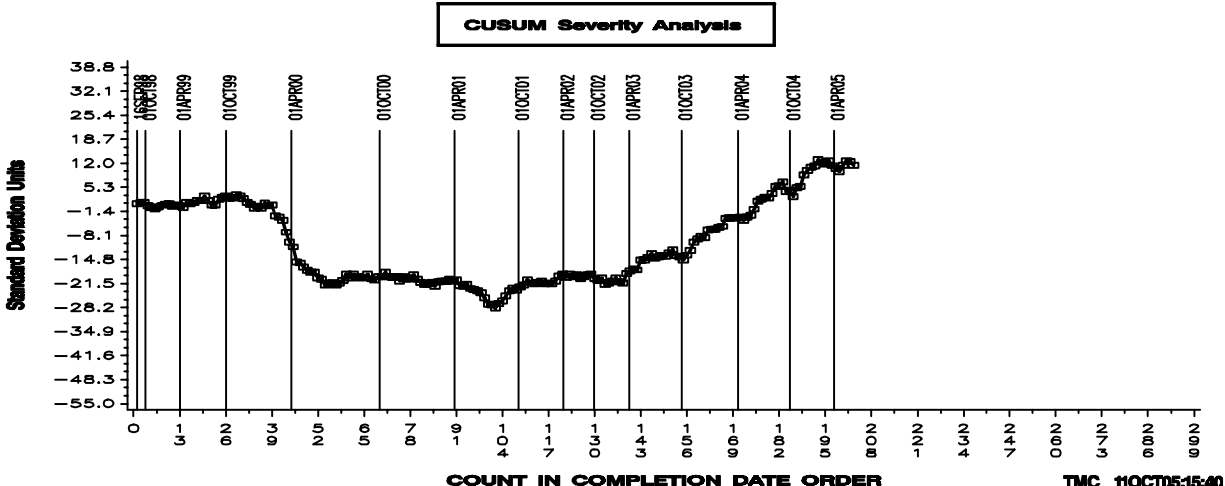
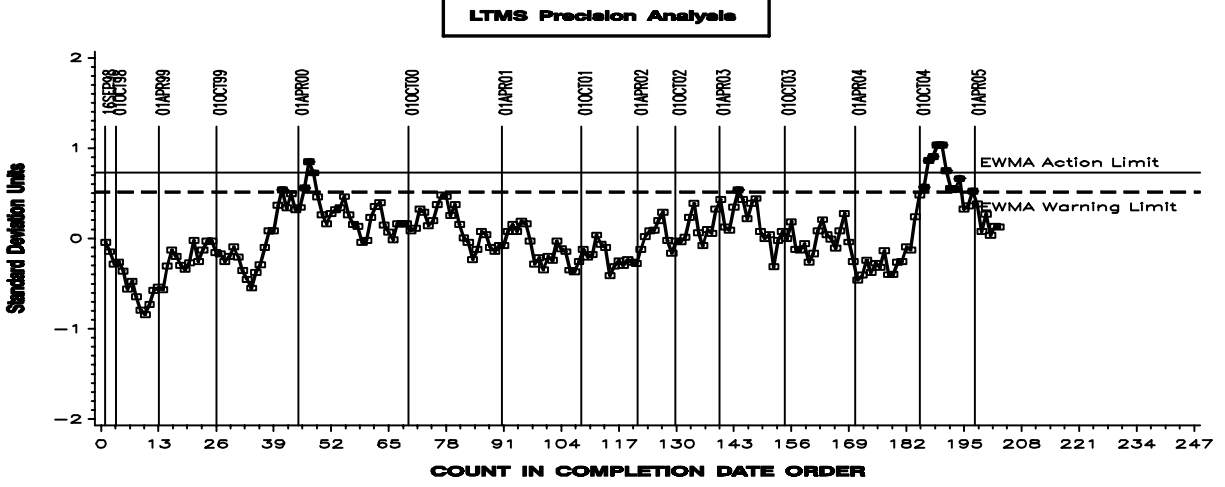
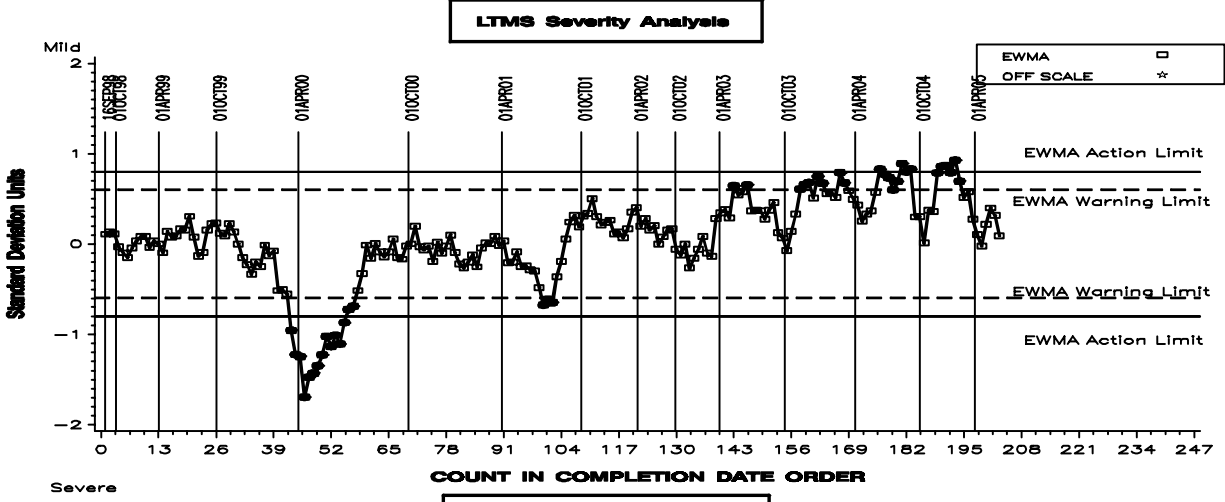
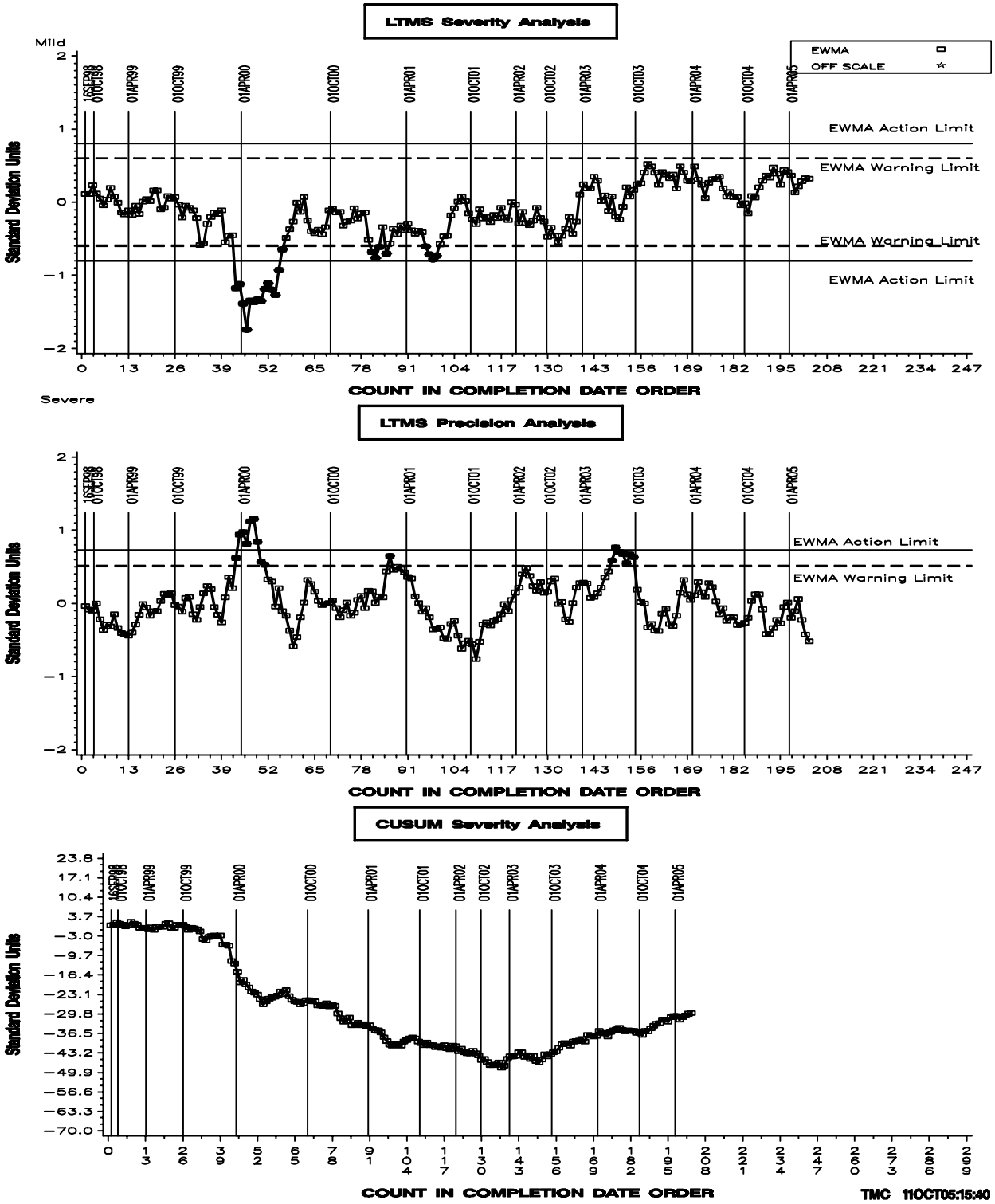


Figure 2

SEQUENCE VG INDUSTRY OPERATIONALLY VALID DATA

AVERAGE ROCKER COVER SLUDGE



SEQUENCE VG INDUSTRY OPERATIONALLY VALID DATA Figure 5

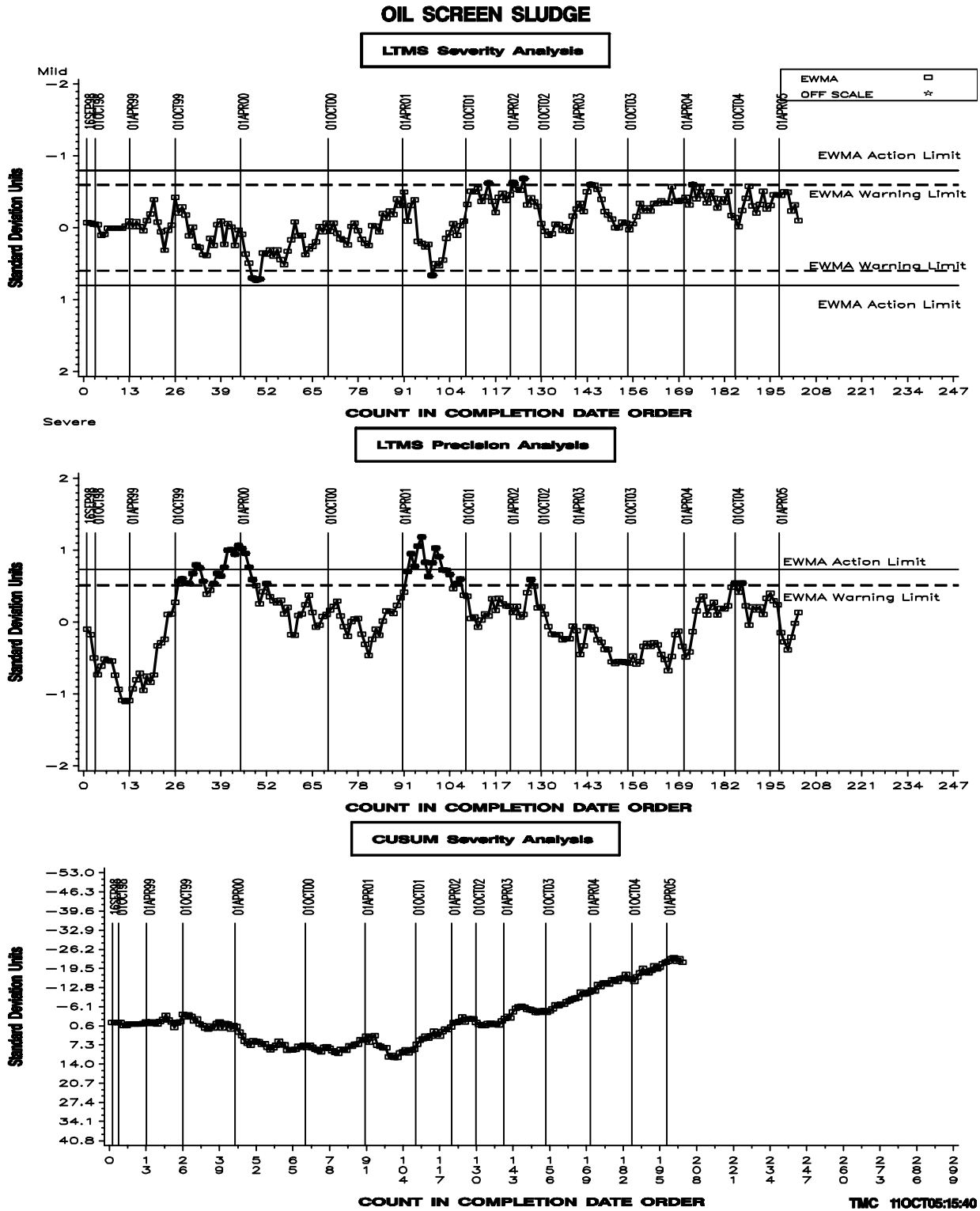


Figure 6

Comparison of Pooled Precision Estimates By ASTM Report Period

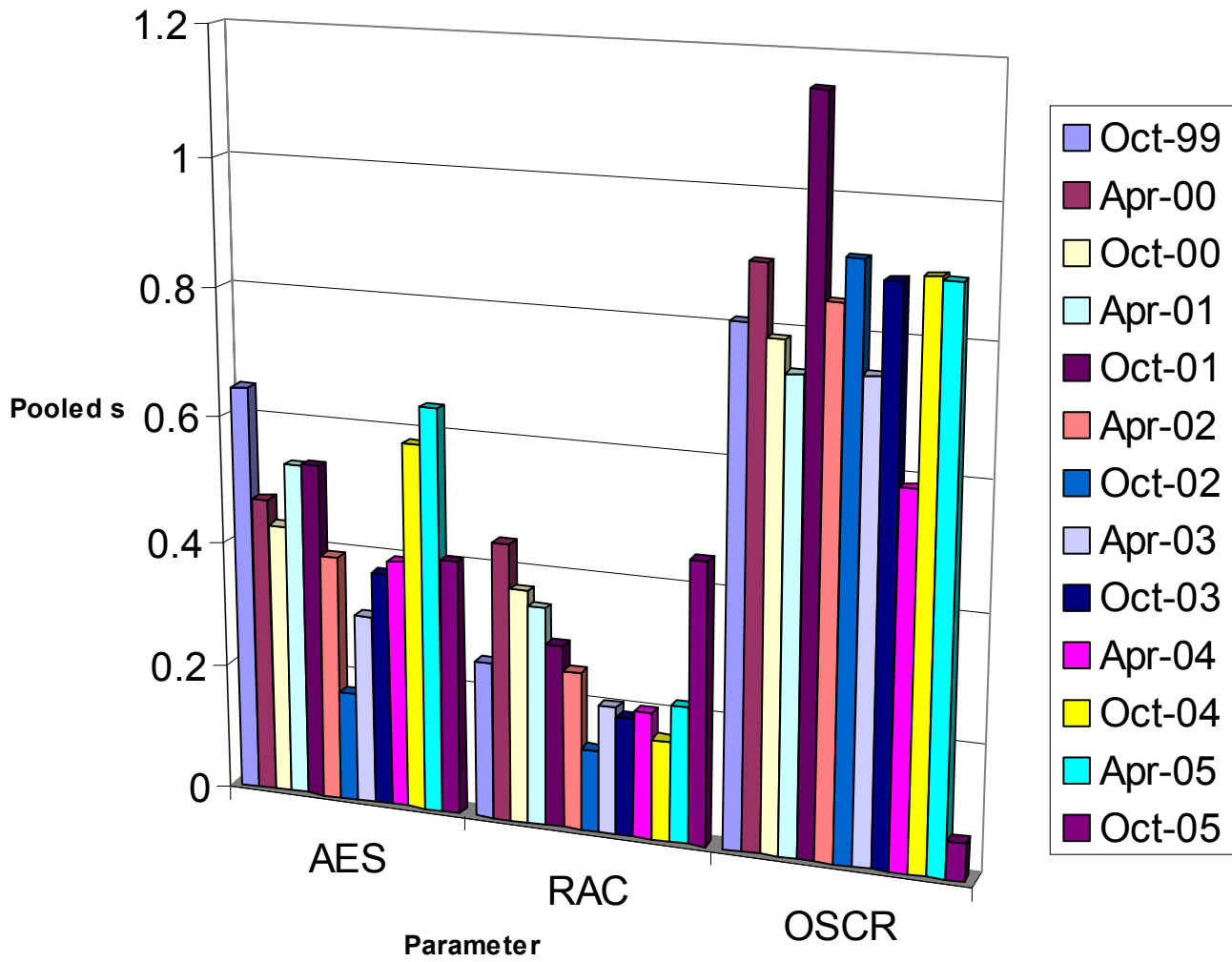


Figure 7

Comparison of Pooled Precision Estimates By ASTM Report Period

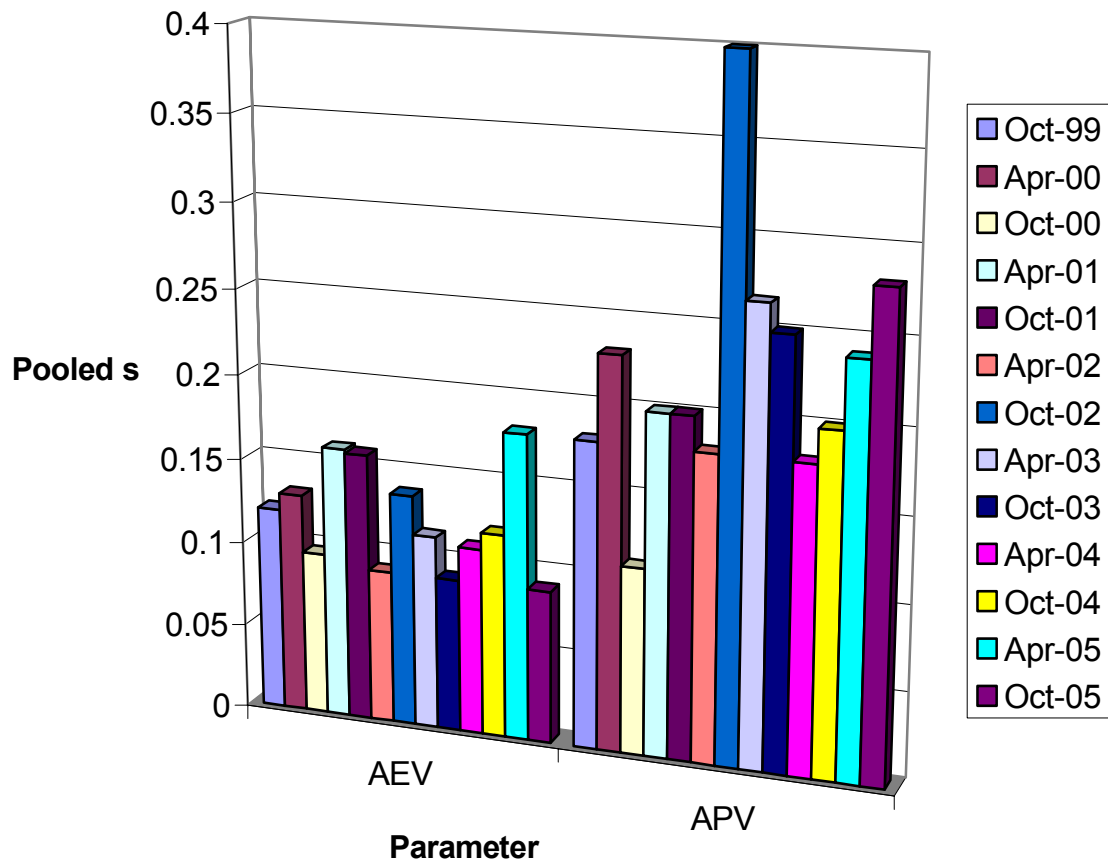


Figure 8

Date	Item Changed	Information Letter
19980901	Matrix testing begins	
19990211	Sequence VG Test approved, matrix stands charted and calibrated where applicable	
19990503	Information Letter 99-1 issued, adding ring weight loss, bore wear and pin wear measurements; as well as other procedural changes	99-1
19990615	Numerous procedure updates as identified in Information Letter 99-2	99-2
19990830	In conjunction with approval of VG fuel batch 996416, new test targets were published for oils 1006 and 1007	
19990830	Batch 996416 was approved for qualified testing at 8/13/99 Surveillance Panel meeting	
19991025	Revised Exhaust Backpressure limits for stages I and II to 102 and 106 kPa, respectively	99-3
19991025	Deleted rating of Underside of Block sludge and revised report forms and data dictionary accordingly	99-3
19991025	Added Section 11 to document stand referencing requirements	99-3
19991025	Added Section 16 and Annex A14, which give precision and bias statements	99-3
19991025	Updated listing of kit parts given in Sections 7.2 and 7.3 and Annex A5	99-3
19991025	Revised the type of oil filter and screen size, Sections 7.4.9 and 8.3.2.2 and A3.8 changed to reflect this	99-3
19991115	Update reference oil targets for oils 1006 and 1007 (n=10), also revised severity adjustment standard deviation	
20000215	Revised Exhaust Backpressure Limits for stages I and II to 104 and 107 kPa, respectively	00-1
20000215	Deleted varnish ratings for cam baffles, oil pan, timing chain cover and rear seal housing	00-1
20000215	Revised Form 8 to not allow value to be entered for oil added at cycle 54 and deleted form 7	00-1
20000802	Added Oil Ring Clogging Rating, changed follower pin wear measurement from all 8 cylin-	00-2
20000802	ders to cylinder 8 only. Changed bore wear measurements from all cylinders to cylinders	00-2
20000802	1 and 8. Changed from ring weight loss to ring gap increase on cylinders 1 & 8. Added	00-2
20000802	transformation for oil screen clogging. Deleted photos for cam baffles, timing chain cover	00-2
20000802	rear seal housing varnish. Report forms and Data dictionary changes, version 20000713	00-2
20001101	Revised Section 13.4.1 Report forms and Data dictionary changes, version 20000831	00-3
20010115	Changed analysis method for water in fuel	01-1
	Deleted 7.1.1, Changed D1744 to D6304. Clarified procedures for bore wear, follower pin	01-1
20010115	, wear, oil screen clogging and top ring gap increase. Revised stage III rocker cover inlet temp	01-1
20010115	Ramp. Deleted ring groove chamfer measurement. Revised dipstick calibration. Revised temperature and pressure calibration frequency, changed dipstick calibration procedure, dropped stage I blowby measurement. Dropped 0.5% O ₂ calibration gas	01-1
20010115	Modified fuel injector flow requirements and deleted Appendix X2.	01-1

20010320	Information Letter written to incorporate information letters not incorporated into Test Method D6593	01-2
20010320	Dropped requirement to measure Benzene in fuel, defined a process for consensus rating and no longer requires analysis of used oil for TBN, vis@100 °C and pentane insolubles	01-3
20011114	Dropped NOx measurements, monitor Power QI, addressed rating changes recommended by Light Duty Rating Task Force and allowed adjustments to blowby flow rates during 1 st 48 hours of the test	02-1
20020301	Replaced, CO, CO ₂ and O ₂ measurements with Lambda	02-2
20020408	Revised references to CRC manuals 12 and 14 to manual 20	02-3
20020515	Allowed use of power supply for EEC and Lambda sensors, revised calibration frequency for Lambda sensor and dropped requirement to measure bore wear Dropped rating of RAC covers for varnish and added Cam baffle varnish ratings	02-4
20020809	Initial targets (n=3) for reference oil 1009	
20021023	Initial targets (n=5) for reference oil 1009	
20021025	Removed remedial statements and made other editorial changes	02-5
20030128	Target Update (n=10) for reference oil 1006-2	
20030327	Removed requirement to include photographs in final report	03-1
20030410	Deleted exhaust gas values for stages I and II	03-2
20030515	Target Update (n=10) for reference oil 1009	
20030905	Corrected Section 16.1.2.1 and revised Section A7.1 to include ACC Conformance Statement. Procedure changes to address processes necessary to use Romeo Engines for calibrated testing Replaced Aliphatic Naphtha with ASTM D235 Type II, Class C solvent	03-3
20040105	Target Update (n=20) for reference oil 1006-2	
20040109	Increased last non reference oil start date from 171 to 180 days Editorial changes to precision statements	04-1
20040207	Target Update (n=20) for reference oil 1009	
20040513	Revised U & L values for MAP and EBP Allowed removal of piston staining	04-2
20040701	Revised section 12.1.5 to allow ring gap adjustments during 1st 48 hours of test	04-3
20041103	Target Update (n=30) for reference oil 1006-2 Target Update (n=30) for reference oil 1009 Target Update (n=22) for reference oil 925-3	
20041214	Revised section 7.1.1 to require degreasing solvent that meets requirements of D235 for Aromatics, color and flash point and require a Certificate of analysis for each batch	04-4
20050101	Revised standard deviation for severity adjustment calculation for all parameters	
20050601	Deleted ring gap increase and follower pin wear, clarified Oil screen rating, updated precision statement, added limits for lost test data, editorial changes	05-1
20050719	Approved fuel batch TA1921LS15, with correction factors for AES, RAC, AEV and APV	05-2
20050726	Changed fuel batch designation from TA1921LS15 to TF2221LS20	05-3