




Test Monitoring Center

@ Carnegie Mellon University
6555 Penn Avenue, Pittsburgh, PA 15206, USA

<http://astmtmc.cmu.edu>
412-365-1000

MEMORANDUM: 16-004
DATE: April 12, 2016
TO: Angela Trader, Chairman, L-33-1 Surveillance Panel
FROM: Scott Parke 
SUBJECT: L-33-1 Testing from October 1, 2015 through March 31, 2016

Please find attached a summary of testing activity this period.

SDP/sdp/mem16-004.sdp.doc

cc: Frank Farber

Jeff Clark

L-33-1 Surveillance Panel

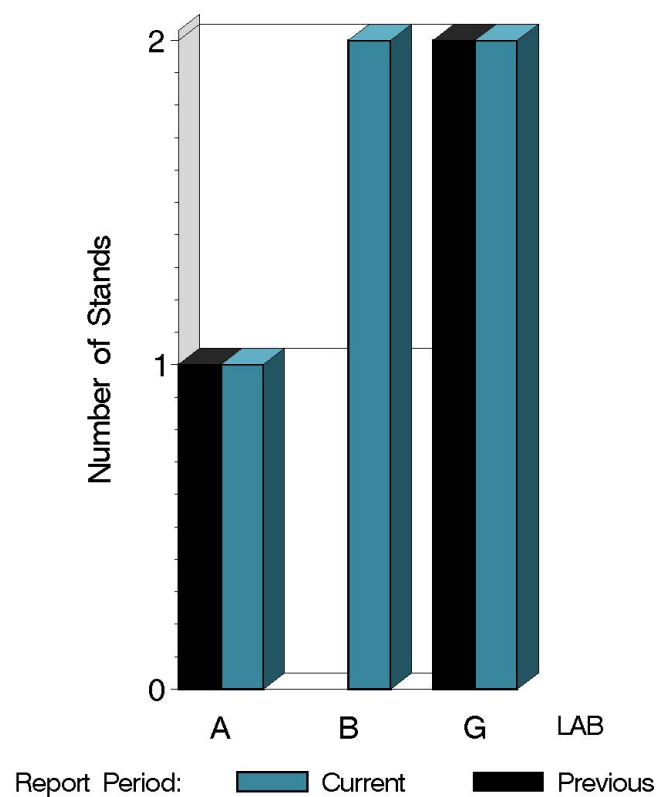
<ftp://ftp.astmtmc.cmu.edu/docs/gear/l331/semiannualreports/l331-04-2016.pdf>

Distribution: email

L-33-1 (D7038)

	Reporting Data	Calibrated on 3-31-16
Number of Labs	3	1
Number of Stands	5	1

BY-LAB STAND
DISTRIBUTION



13:45:03 11APR2016

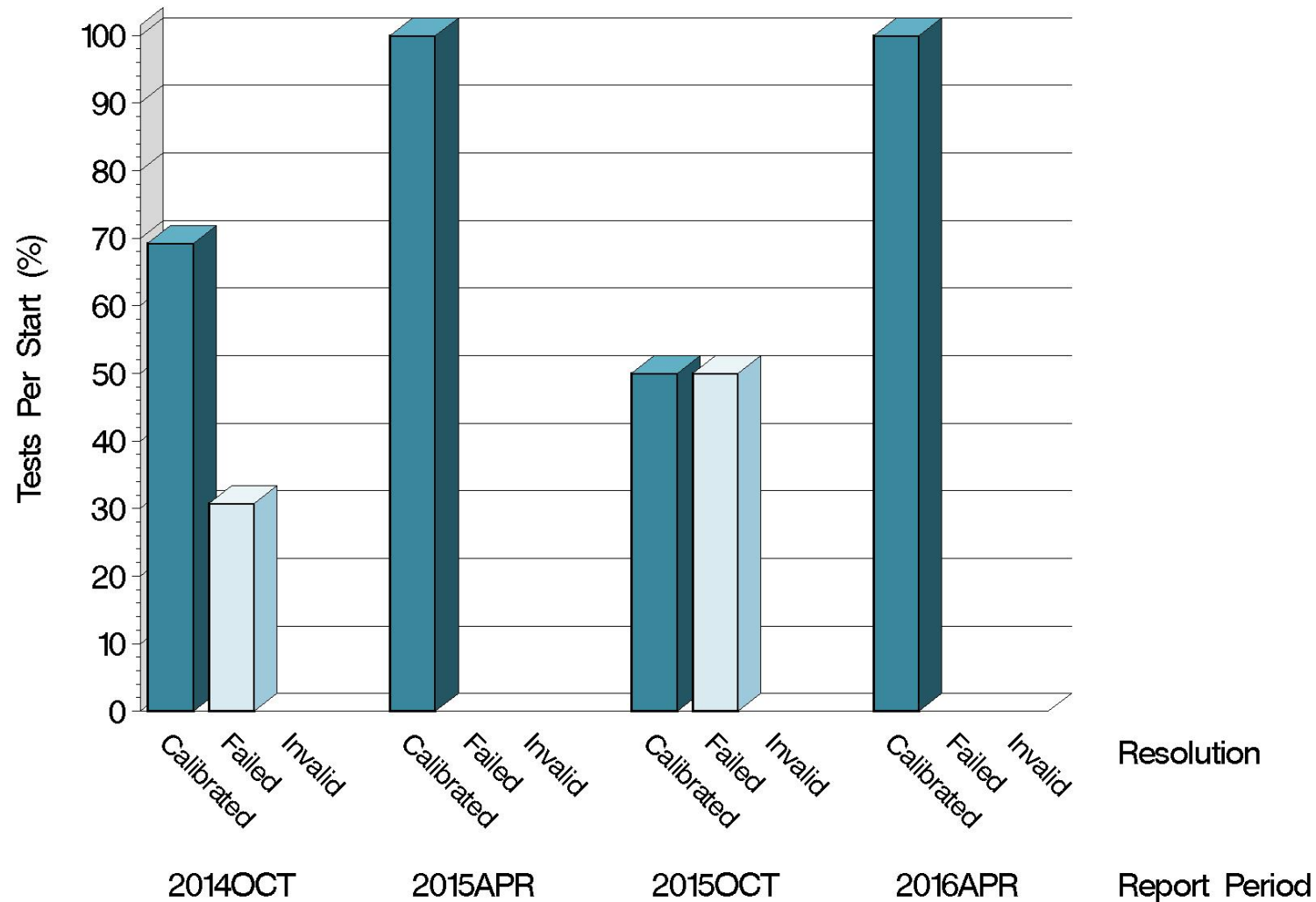
L-33-1 (D7038)

Test Distribution by Oil and Validity

					Totals	
					Last Period	This Period
		123-2	155	155-1		
Accepted for calibration	AC	1	0	0	1	1
Rejected (Mild)	OC	0	0	0	0	0
Rejected (Severe)	OC	0	0	0	1	0
Rejected (Precision)	OC	0	0	0	0	0
Invalidated calibration	LC	0	0	0	0	0
Aborted	XC	0	0	0	0	0
Unacceptable info run	MI	0	0	1	0	1
Accepted information run	NI	6	0	6	10	12
Total		7	0	7	12	14

L-33-1 (D7038)

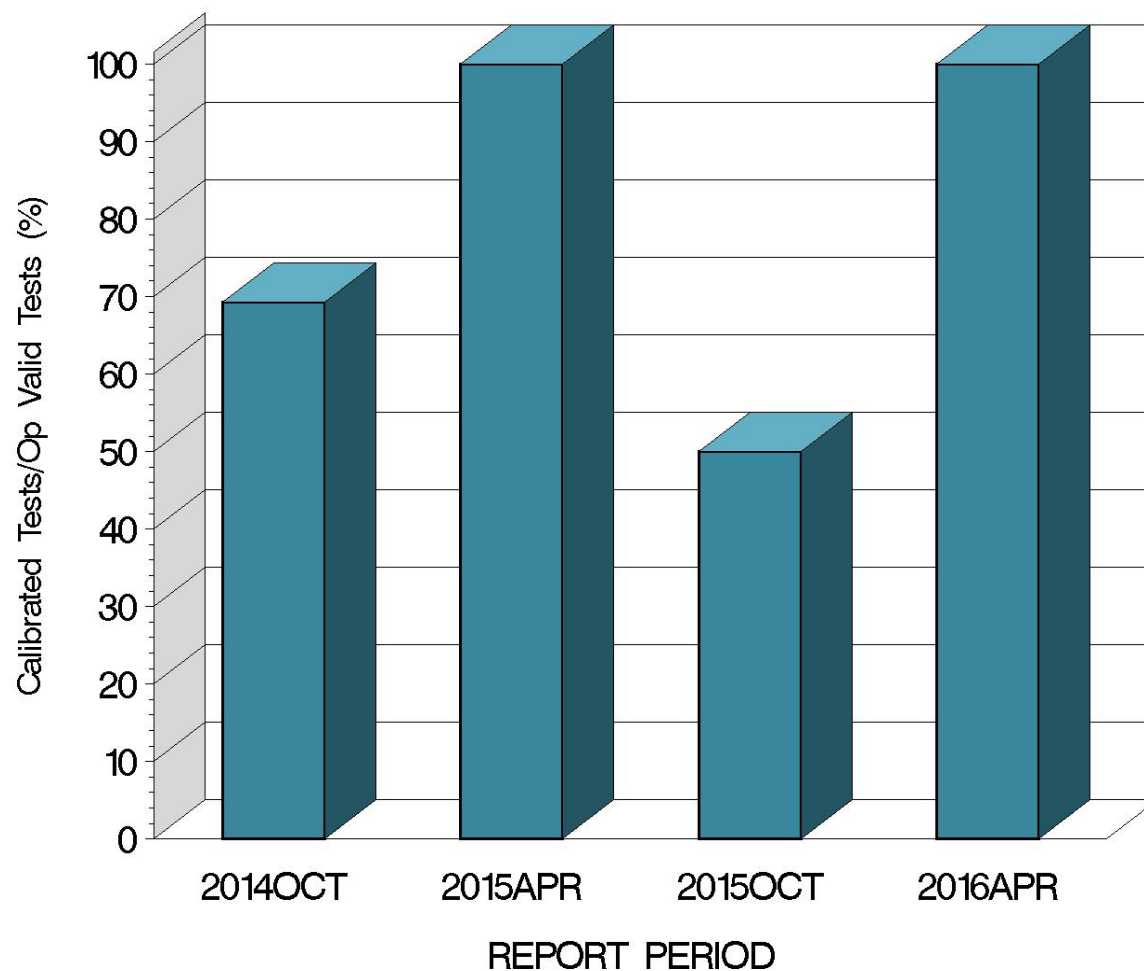
CALIBRATION ATTEMPT SUMMARY



13:48:03 11APR2016

L-33-1 (D7038)

OPERATIONALLY VALID TESTS
MEETING ACCEPTANCE CRITERIA



13:48:03 11APR2016

L-33-1 (D7038)

CAUSES FOR LOST TESTS

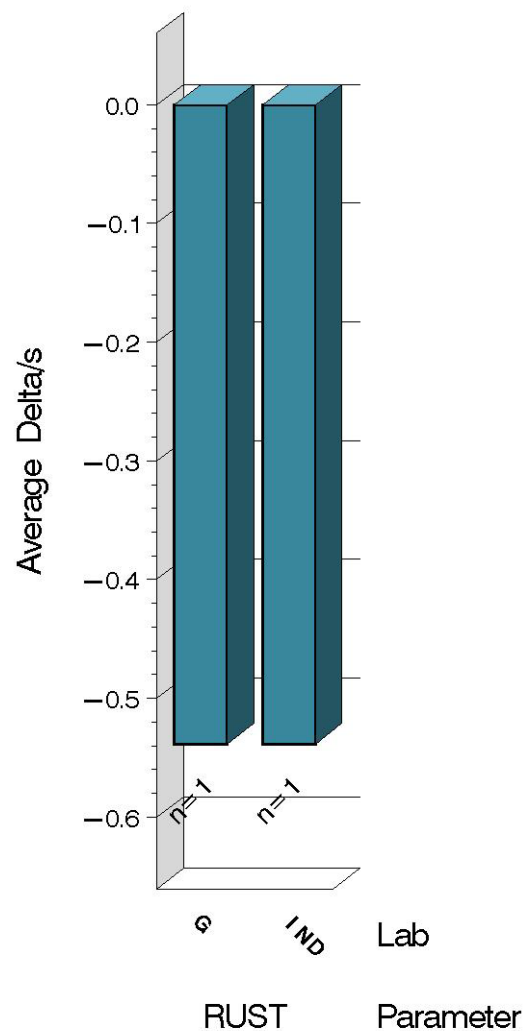
		Oil			Validity			Loss Rate		
Lab	Cause	123-2	155	155-1	RC	LC	XC	Lost	Starts	%
	No tests were lost this period.							0	14	0%
	Lost	0	0	0	0	0	0			
	Starts	7	0	7	14	14	14			
	%	0%	0%	0%	0%	0%	0%			

One test development run was unusable due to storage box heater failure.

L-33-1 (D7038)

TEST SEVERITY

DELTA/S BY LAB



Average Δ/s by Lab

Lab	n	RUST
G	1	-0.538
Industry	1	-0.538
Shift	1	-0.135 merits

Test Monitoring Center

<http://astmtmc.cmu.edu>

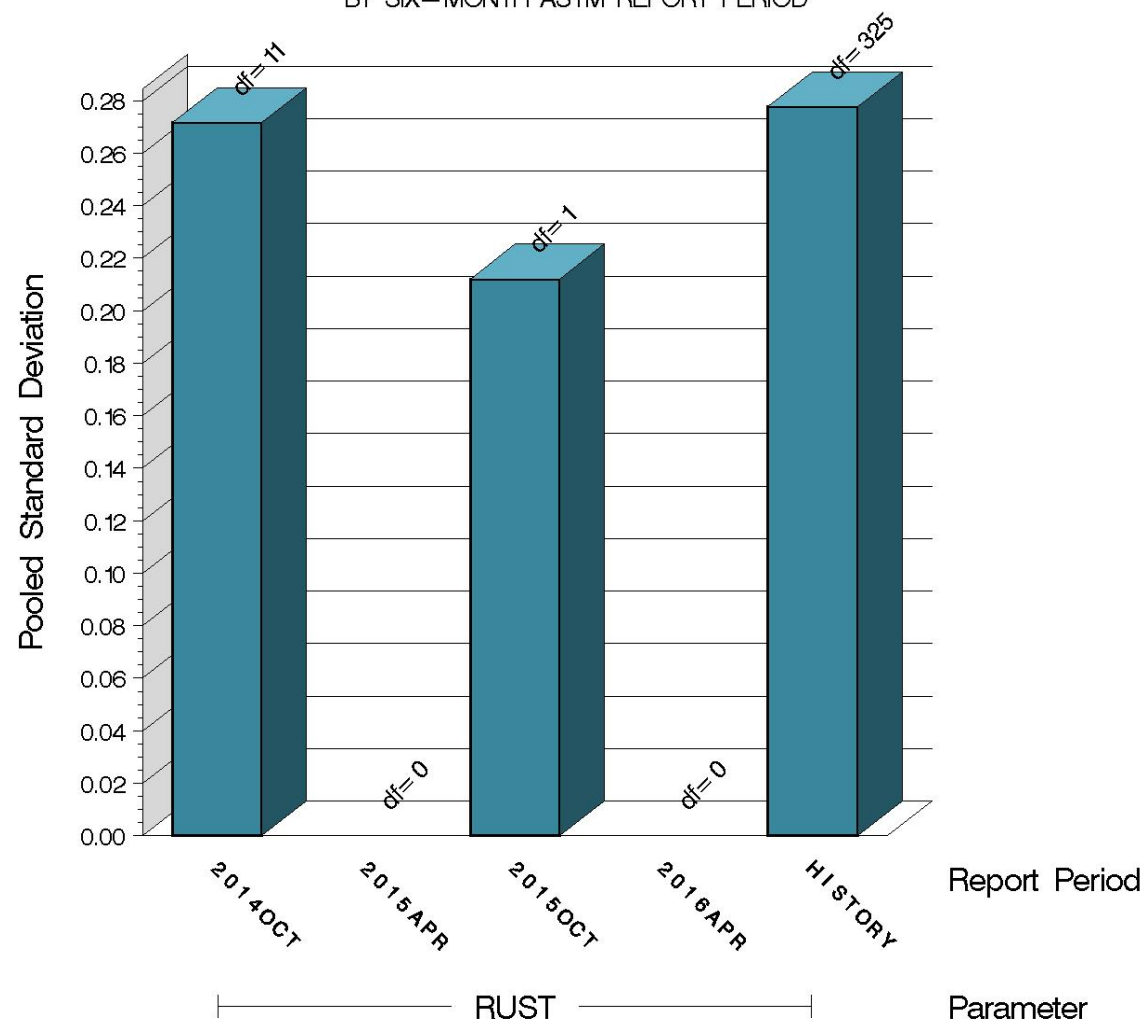


A Program of ASTM International

L-33-1 (D7038)

TEST PRECISION

POOLED STANDARD DEVIATION
BY SIX-MONTH ASTM REPORT PERIOD



13:48:03 11APR2016

L-33-1 (D7038)

SUMMARY OF SEVERITY & PRECISION

Severity
Average RUST Δ /s this period was -0.538. Using the target standard deviation for oil 155 (0.250), this equates to 0.135 merits severe. Most testing activity this period (13 of 14 tests) was done as part of test development for American Axle hardware. None of this testing contributes to control charting.
Precision
Precision remained within-limits throughout the period.

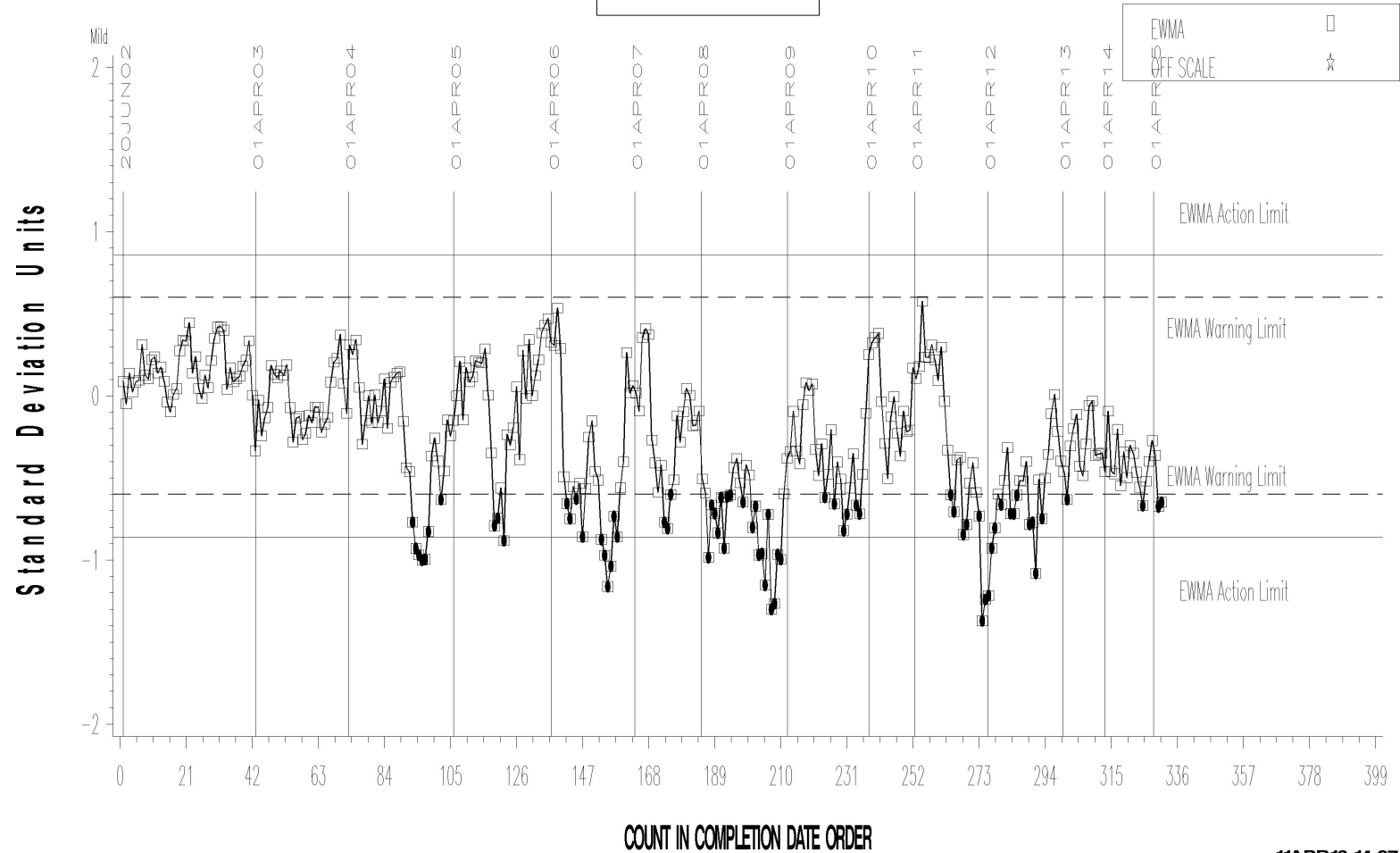
Industry control charts follow.

L-33-1 (D7038)

L-33-1 INDUSTRY OPERATIONALLY VALID DATA

FINAL RUST RESULT

LTMS Severity Analysis



Spvorp

11APR16: 14:07

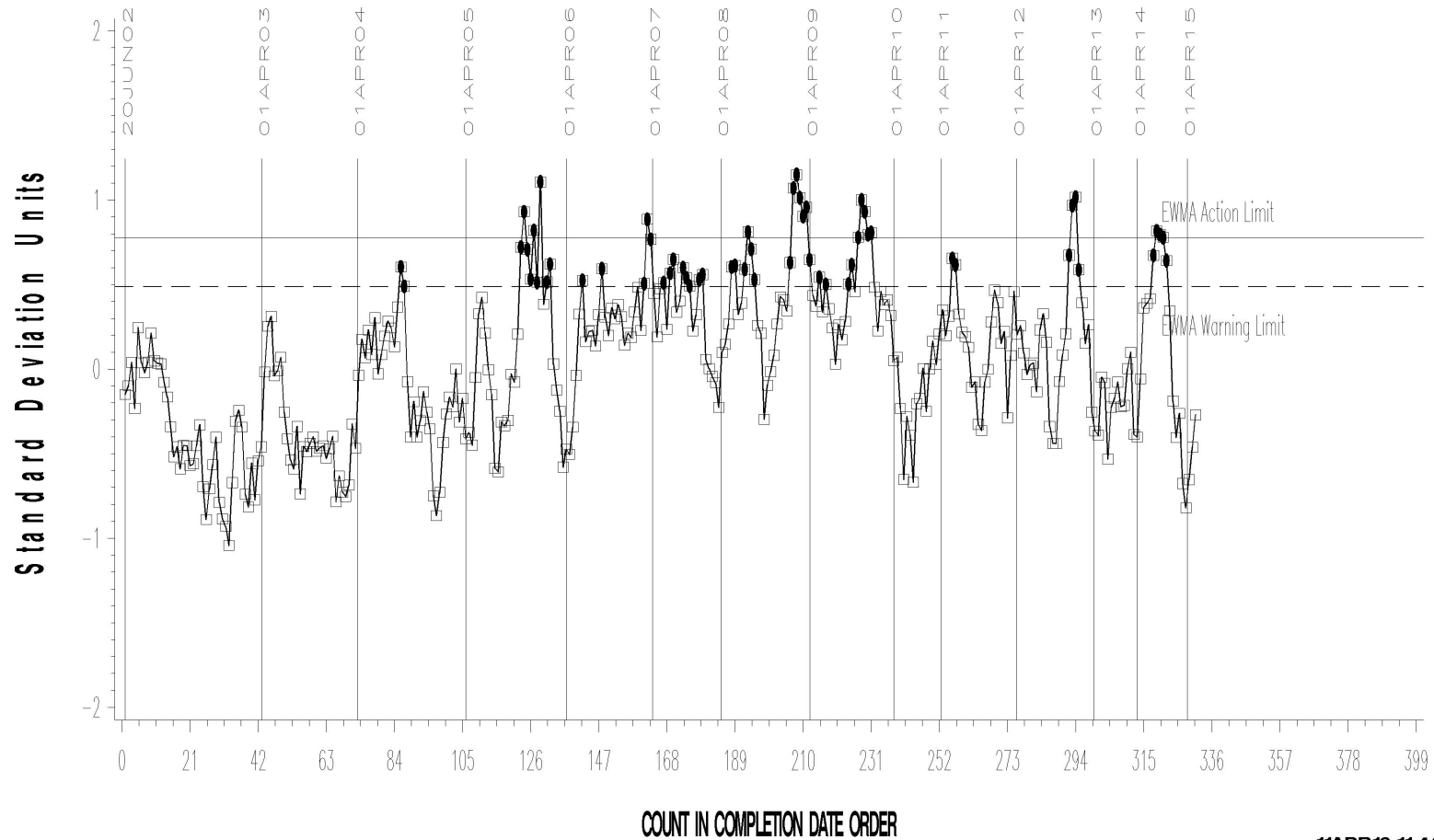
L-33-1 (D7038)

L-33-1 INDUSTRY OPERATIONALLY VALID DATA



FINAL RUST RESULT

LTMS Precision Analysis



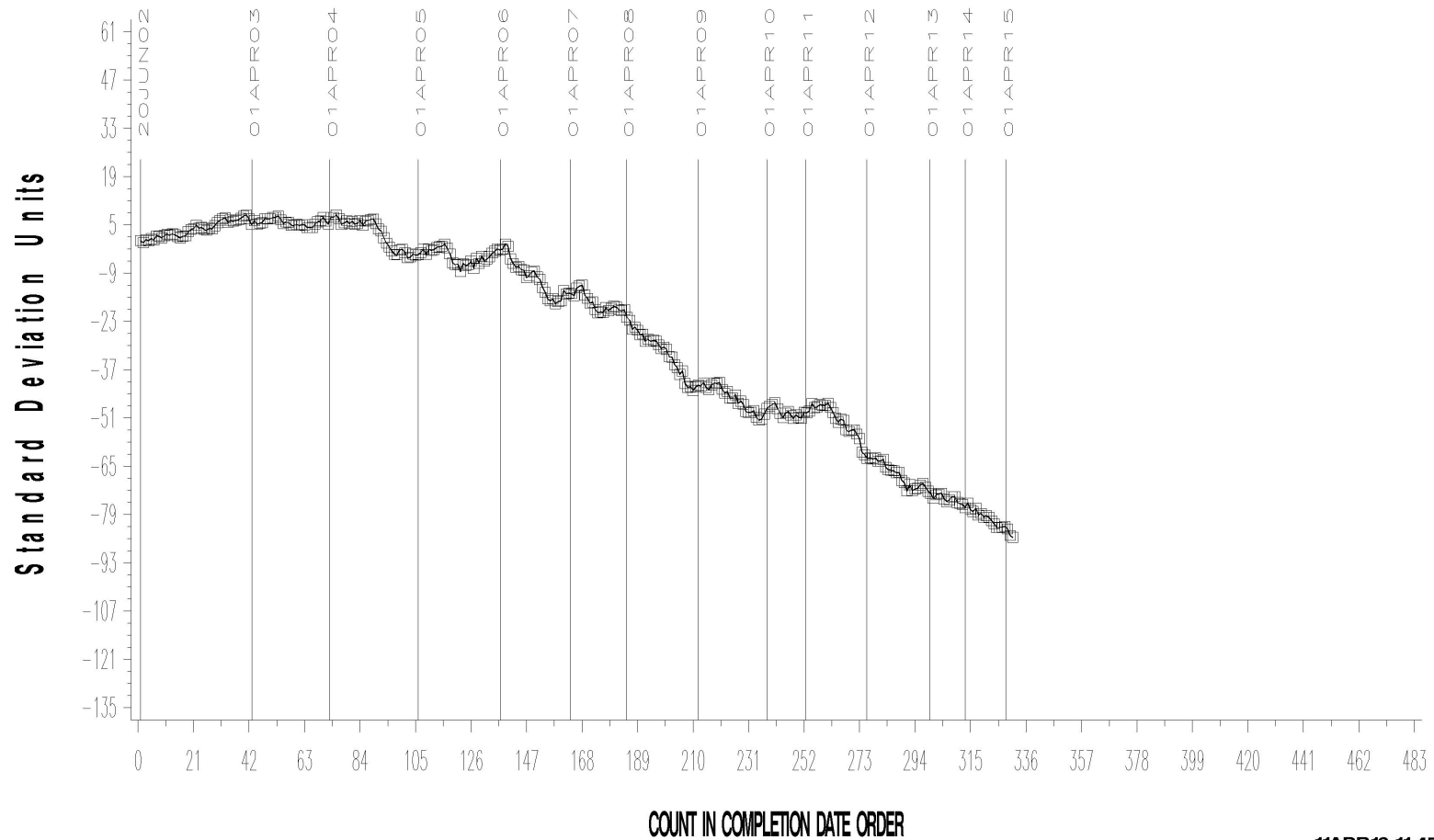
11APR16:11:44

L-33-1 (D7038)

L-33-1 INDUSTRY OPERATIONALLY VALID DATA

FINAL RUST RESULT

CUSUM Severity Analysis



11APR16:11:45

L-33-1 (D7038)

TIMELINE ADDITIONS

Effective Date	Information Letter	Event
		There were no timeline additions.

L-33-1 (D7038)

LAB VISITS

No L-33-1 lab visits were conducted during this period.

INFORMATION LETTERS

No information letters were issued this period.

L-33-1 (D7038)

STATUS OF REFERENCE OIL SUPPLY

		@ TMC	
Oil	Cans @ Labs	Cans	Gallons
123-2	9	133	133.8
155	0	15	15.0
155-1	10	231	231.0
Total	19	379	379.8

The TMC quantity remaining presumes usage only for L-33-1 testing. Oil 155/155-1 is also used in other test areas (L-37, L-37-1, L-60-1, and HTCT).