



Test Monitoring Center


Carnegie Mellon University
6555 Penn Avenue, Pittsburgh, PA 15206, USA

<http://astmtmc.cmu.edu>
412-365-1000

MEMORANDUM: 12-044

DATE: December 3, 2012

TO: Dale Smith, Chairman, L-33-1 Surveillance Panel

FROM: Scott Parke 

SUBJECT: L-33-1 Testing from April 1, 2012 through September 30, 2012

Please find attached a summary of testing activity this period.

SDP/sdp/mem12-044.sdp.doc

cc: Frank Farber

Jeff Clark

L-33-1 Surveillance Panel

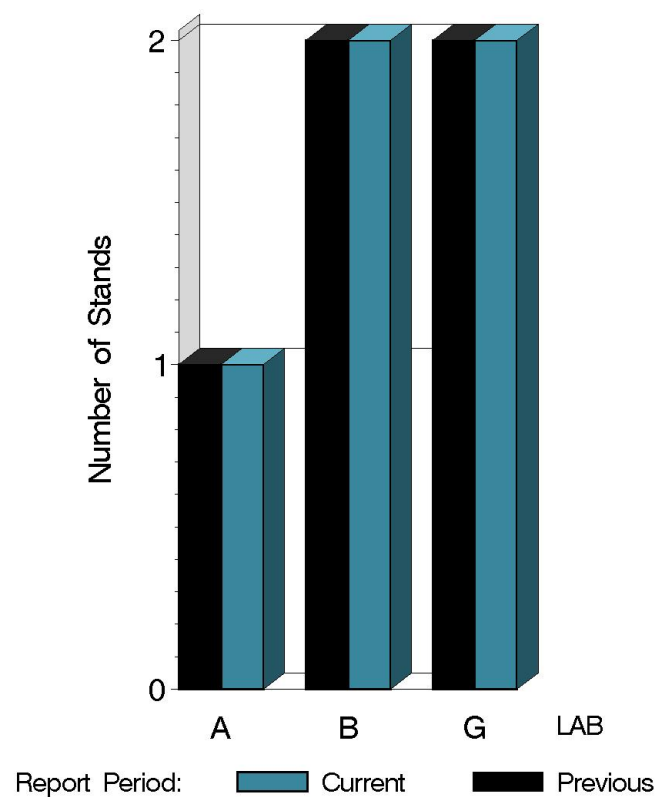
<ftp://ftp.astmtmc.cmu.edu/docs/gear/l331/semiannualreports/l331-10-2012.pdf>

Distribution: email

L-33-1 (D7038)

	Reporting Data	Calibrated on 9-30-12
Number of Labs	4	4
Number of Stands	4	4

BY-LAB STAND
DISTRIBUTION



15:57:22 20NOV2012

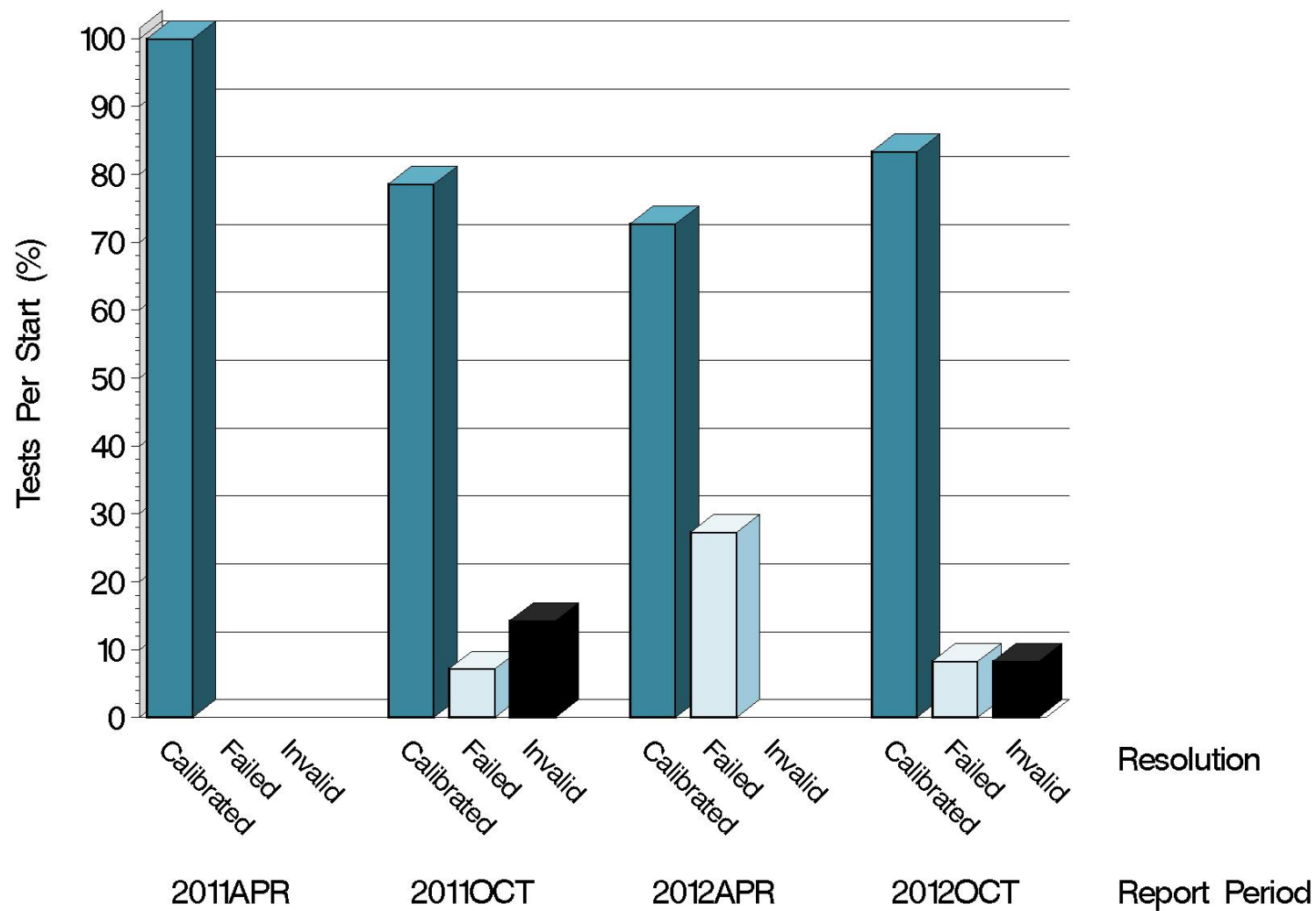
L-33-1 (D7038)

Test Distribution by Oil and Validity

					Totals	
					Last Period	This Period
		123-2	155	155-1		
Accepted for calibration	AC	5	2	3	8	10
Rejected (Mild)	OC	0	0	0	0	0
Rejected (Severe)	OC	0	0	1	1	1
Rejected (Precision)	OC	0	0	0	2	0
Invalidated calibration	LC	0	0	1	0	1
Aborted	XC	0	0	0	0	0
Accepted information run	NI	0	0	0	0	0
Total		5	2	5	11	12

L-33-1 (D7038)

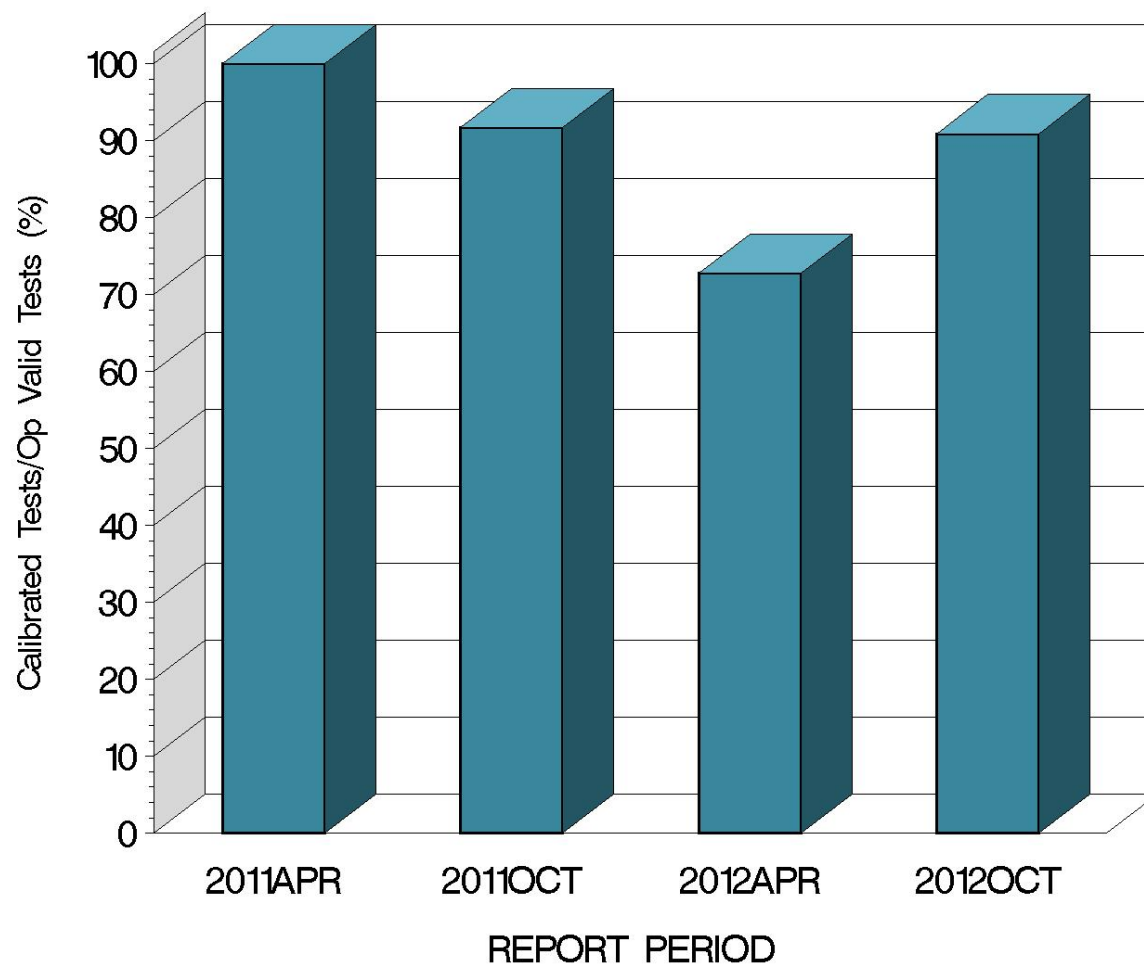
CALIBRATION ATTEMPT SUMMARY



15:57:22 20NOV2012

L-33-1 (D7038)

OPERATIONALLY VALID TESTS
MEETING ACCEPTANCE CRITERIA

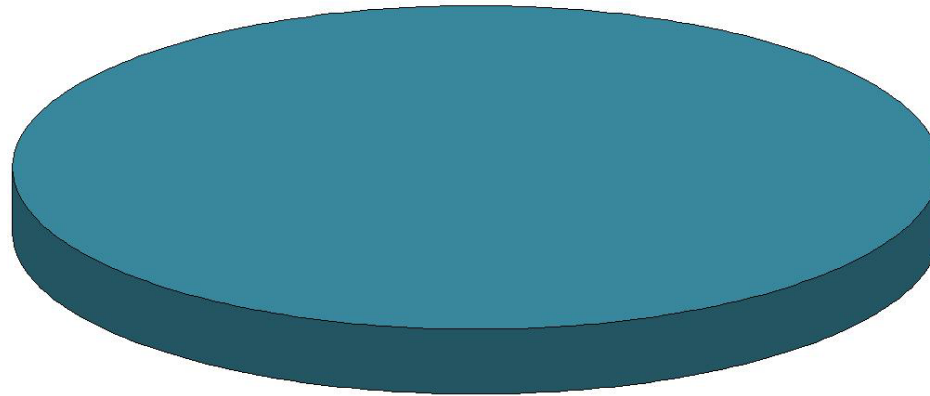


15:57:22 20NOV2012

L-33-1 (D7038)

CAUSES FOR FAILED TESTS

Yi Severe
1
100%



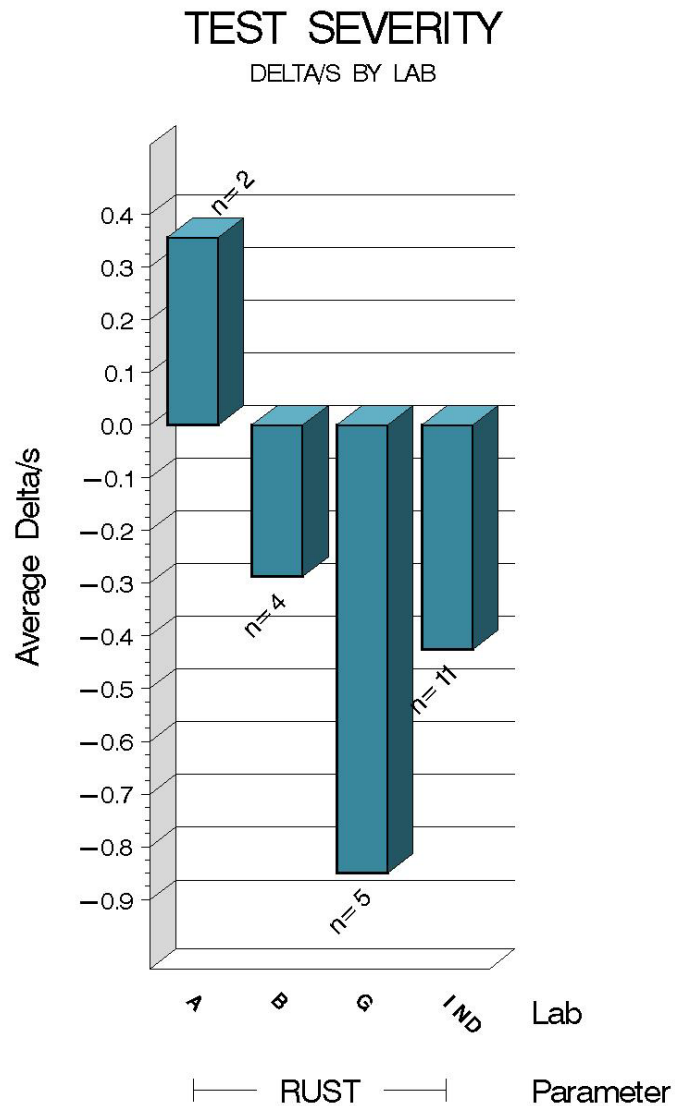
15:57:22 20NOV2012

L-33-1 (D7038)

CAUSES FOR LOST TESTS

		Oil			Validity			Loss Rate		
Lab	Cause	123-2	155	155-1	RC	LC	XC	Lost	Starts	%
G	Excess downtime due to lab power outage.			●		●		1	6	17%
	Lost	0	0	1	0	1	0			
	Starts	5	2	5	12	12	12			
	%	0%	0%	20%	0%	8%	0%			

L-33-1 (D7038)

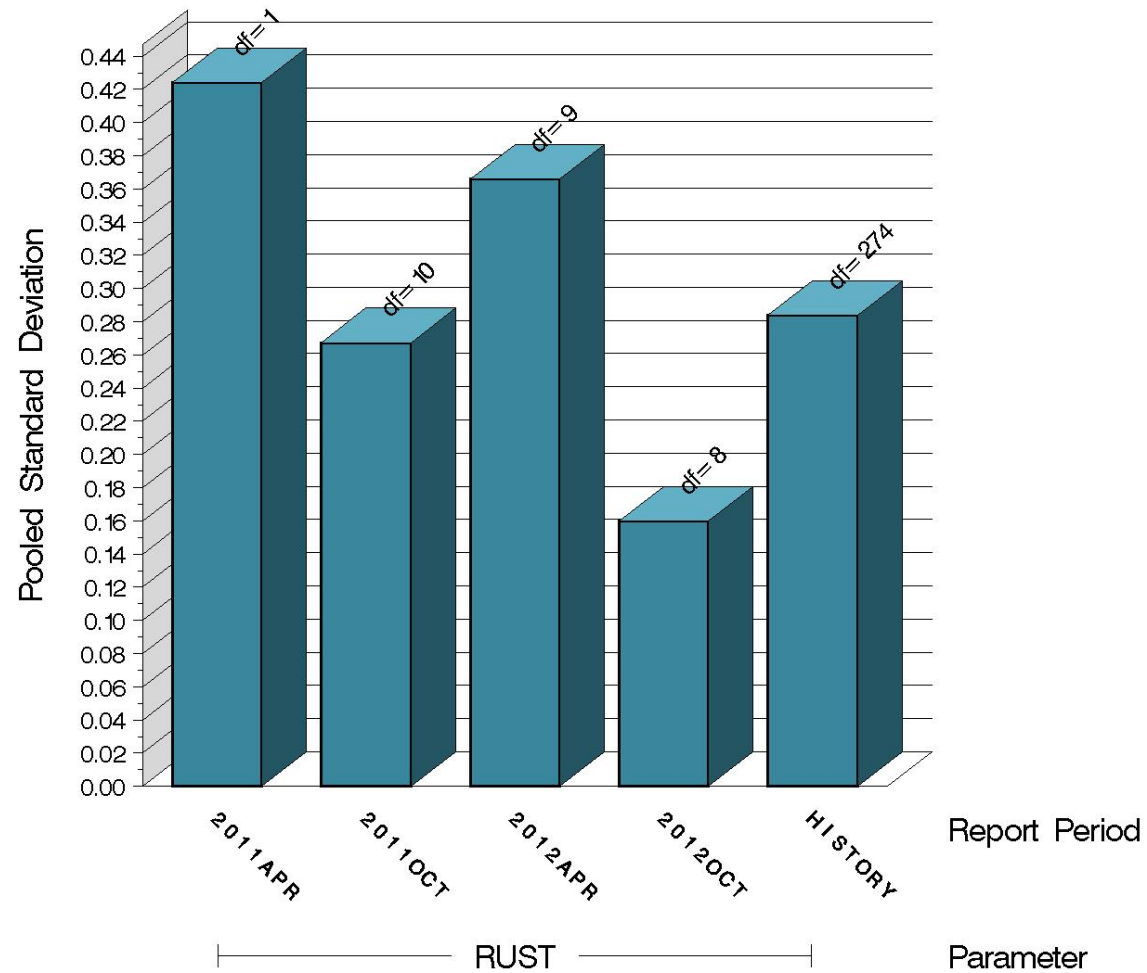


Average Δ/s by Lab		
Lab	n	RUST
A	2	0.355
B	4	-0.288
G	5	-0.850
Industry	11	-0.426
Shift	11	-0.107

L-33-1 (D7038)

TEST PRECISION

POOLED STANDARD DEVIATION
BY SIX-MONTH ASTM REPORT PERIOD



15:57:22 20NOV2012

L-33-1 (D7038)

SUMMARY OF SEVERITY & PRECISION

Severity
Average RUST Δ /s this period was -0.426. Using the target standard deviation for oil 155, this equates to -0.107 merits. RUST is currently exceeding the EWMA control chart action limit.
Precision
RUST precision remained within control chart limits throughout this period.

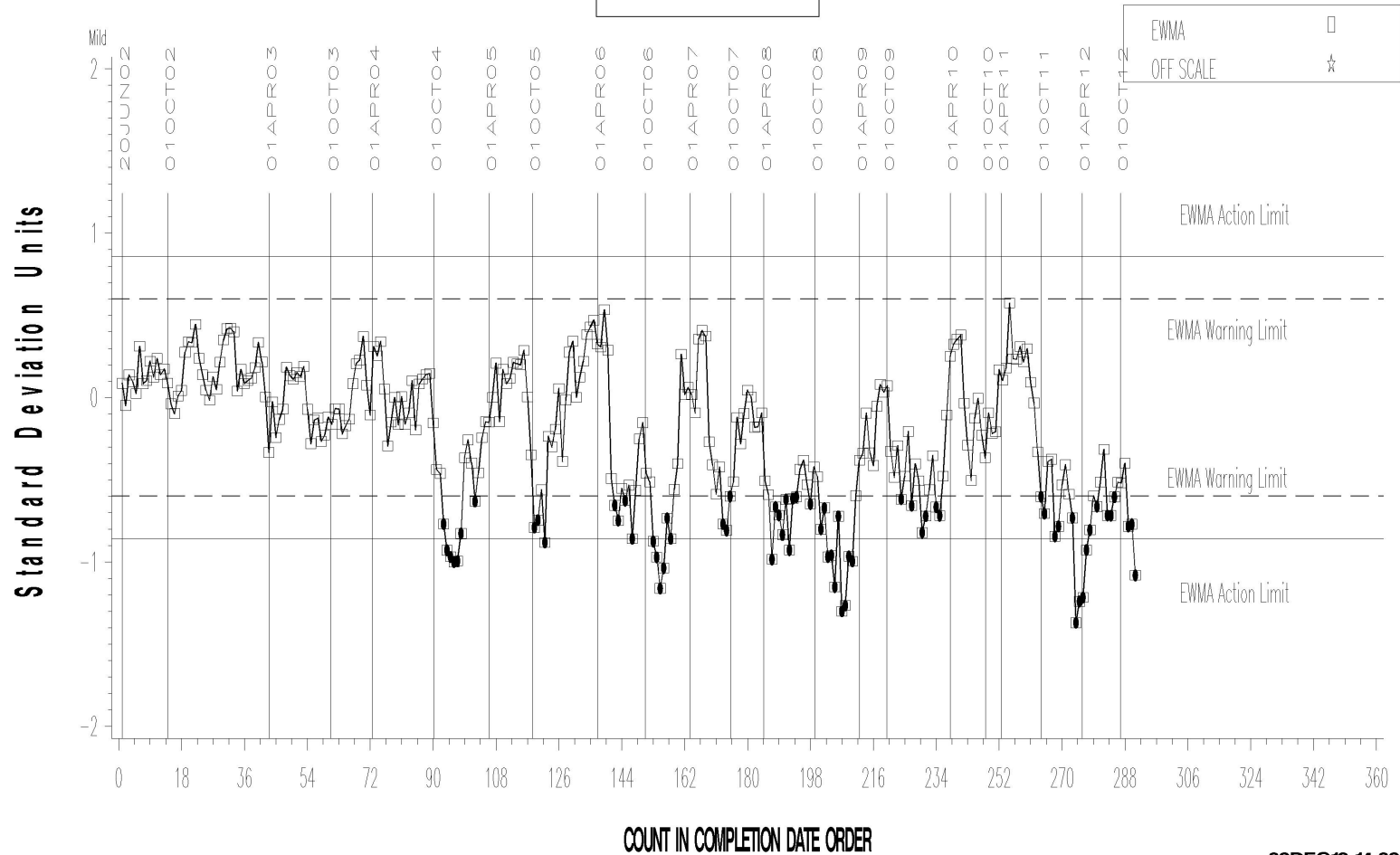
Industry control charts follow.

L-33-1 (D7038)

L-33-1 INDUSTRY OPERATIONALLY VALID DATA

FINAL RUST RESULT

LTMS Severity Analysis



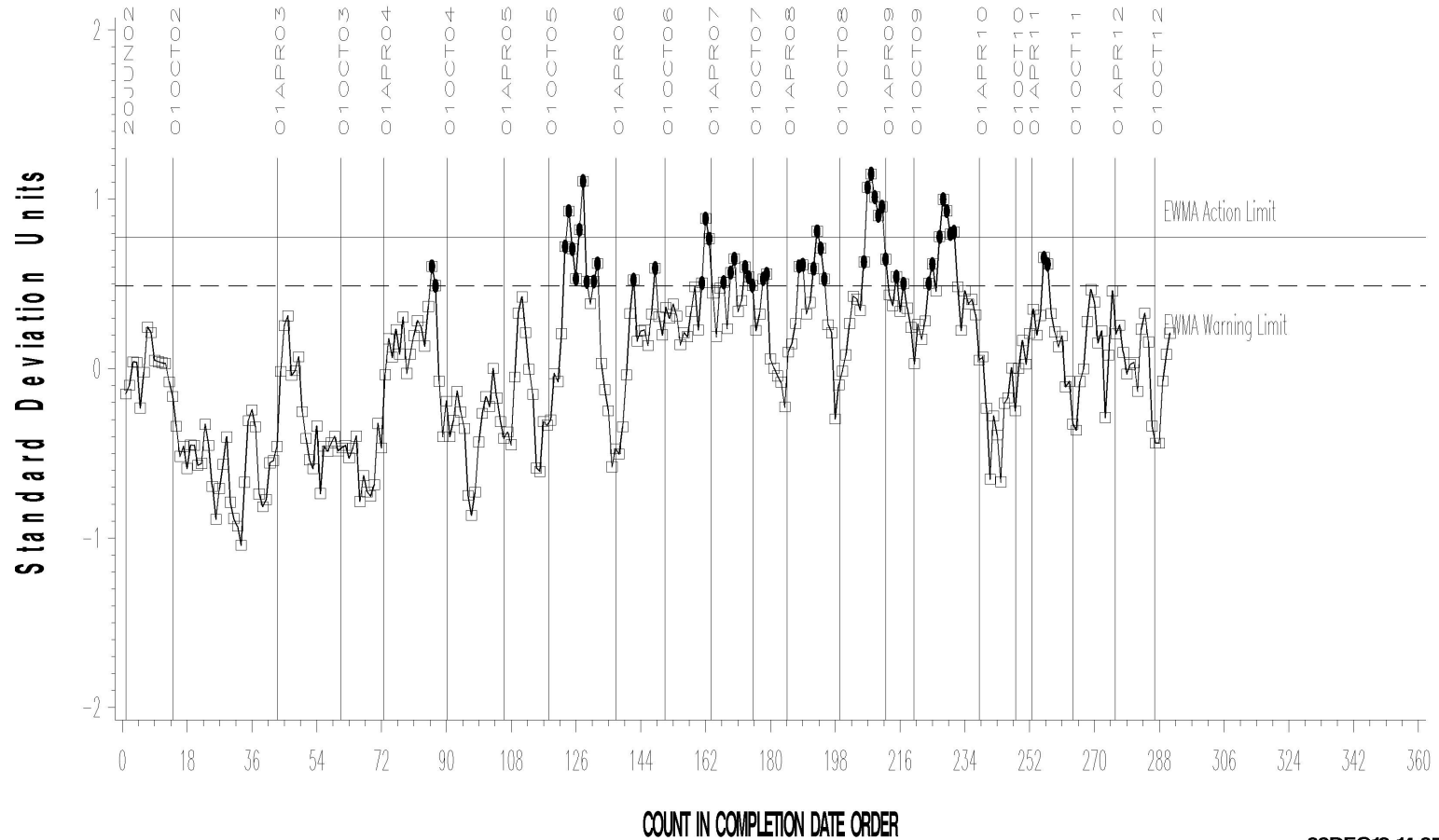
03DEC12:14:03

L-33-1 (D7038)

L-33-1 INDUSTRY OPERATIONALLY VALID DATA

FINAL RUST RESULT

LTMS Precision Analysis



03DEC12:14:05

L-33-1 (D7038)

L-33-1 INDUSTRY OPERATIONALLY VALID DATA

FINAL RUST RESULT

CUSUM Severity Analysis



03DEC12:14:05

L-33-1 (D7038)

TIMELINE ADDITIONS

Effective Date	Information Letter	Event
		No additions have been made this period.

L-33-1 (D7038)

LAB VISITS

No L-33-1 lab visits were conducted during this period.

INFORMATION LETTERS

No L-33-1 information letters were issued during this period.

L-33-1 (D7038)

STATUS OF REFERENCE OIL SUPPLY

		@ TMC	
Oil	Cans @ Labs	Cans	Gallons
123-2	12	169	169.8
155	2	36	36.4
155-1	11	433	433.8
Total	25	638	639.9

The TMC quantity remaining presumes usage only for L-33-1 testing. Oil 155/155-1 is also used in other test areas (L-37, L-37-1, and HTCT).