



Test Monitoring Center

@ Carnegie Mellon University
6555 Penn Avenue, Pittsburgh, PA 15206, USA

<http://astmtmc.cmu.edu>
412-365-1000

MEMORANDUM: 20-040

DATE: October 9, 2020

TO: Anthony Lange, Chairman, L-33-1 Surveillance Panel

FROM: Dylan Beck *Dylan Beck*

SUBJECT: L-33-1 Testing from April 1, 2020 through September 30, 2020

Attached is a summary of reference testing activity this period.

DJB/djb/mem20-040.djb.doc

cc: Frank Farber
Jeff Clark

L-33-1 Surveillance Panel

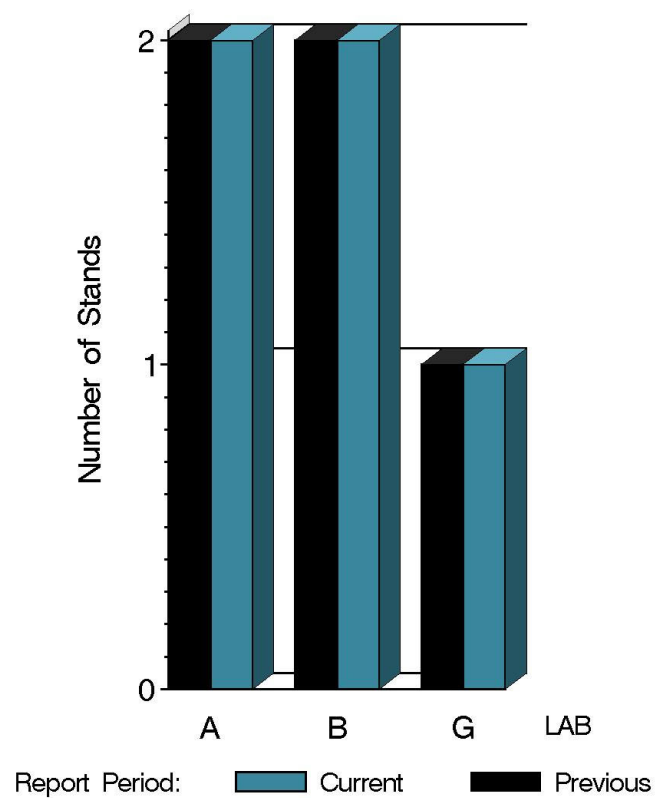
<http://www.astmtmc.cmu.edu/ftp/docs/gear/l331/semiannualreports/L331-10-2020.pdf>

Distribution: email

L-33-1 (D7038)

	Reporting Data	Calibrated on 9-30-20
Number of Labs	3	3
Number of Stands	5	5

BY-LAB STAND
DISTRIBUTION



8:06:36 08OCT2020

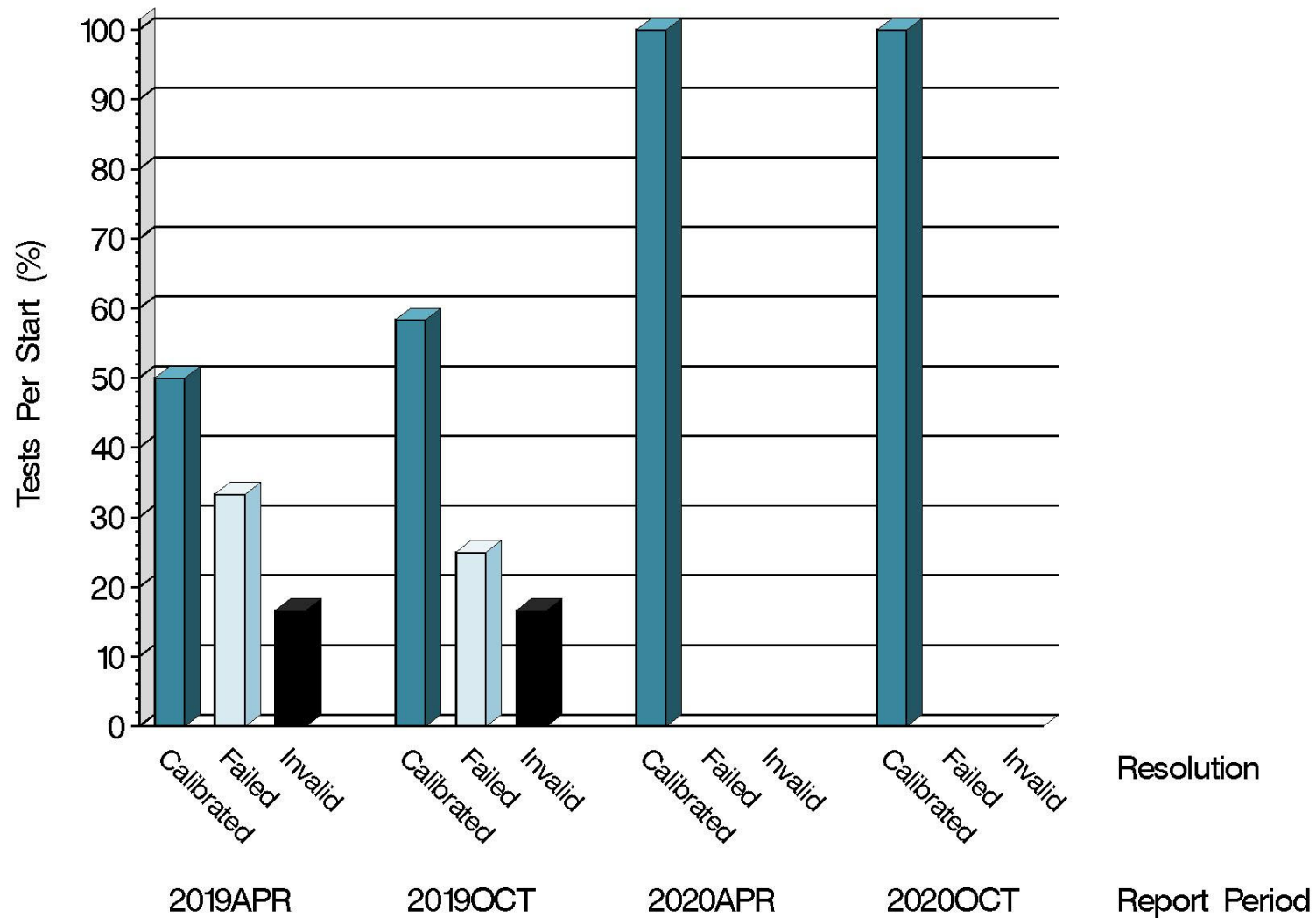
L-33-1 (D7038)

Test Distribution by Oil and Validity

					Totals	
					Last Period	This Period
		123-2	155	155-1		
Accepted for calibration	AC	4	0	2	4	6
Rejected (Mild)	OC	0	0	0	1	0
Rejected (Severe)	OC	0	0	0	0	0
Rejected (Precision)	OC	0	0	0	0	0
Invalidated calibration	LC	0	0	0	0	0
Aborted	XC	0	0	0	0	0
Unacceptable info run	MI	0	0	0	0	0
Accepted information run	NI	2	0	3	5	5
Total		6	0	5	10	11

L-33-1 (D7038)

CALIBRATION ATTEMPT SUMMARY



8:06:36 08OCT2020

Test Monitoring Center

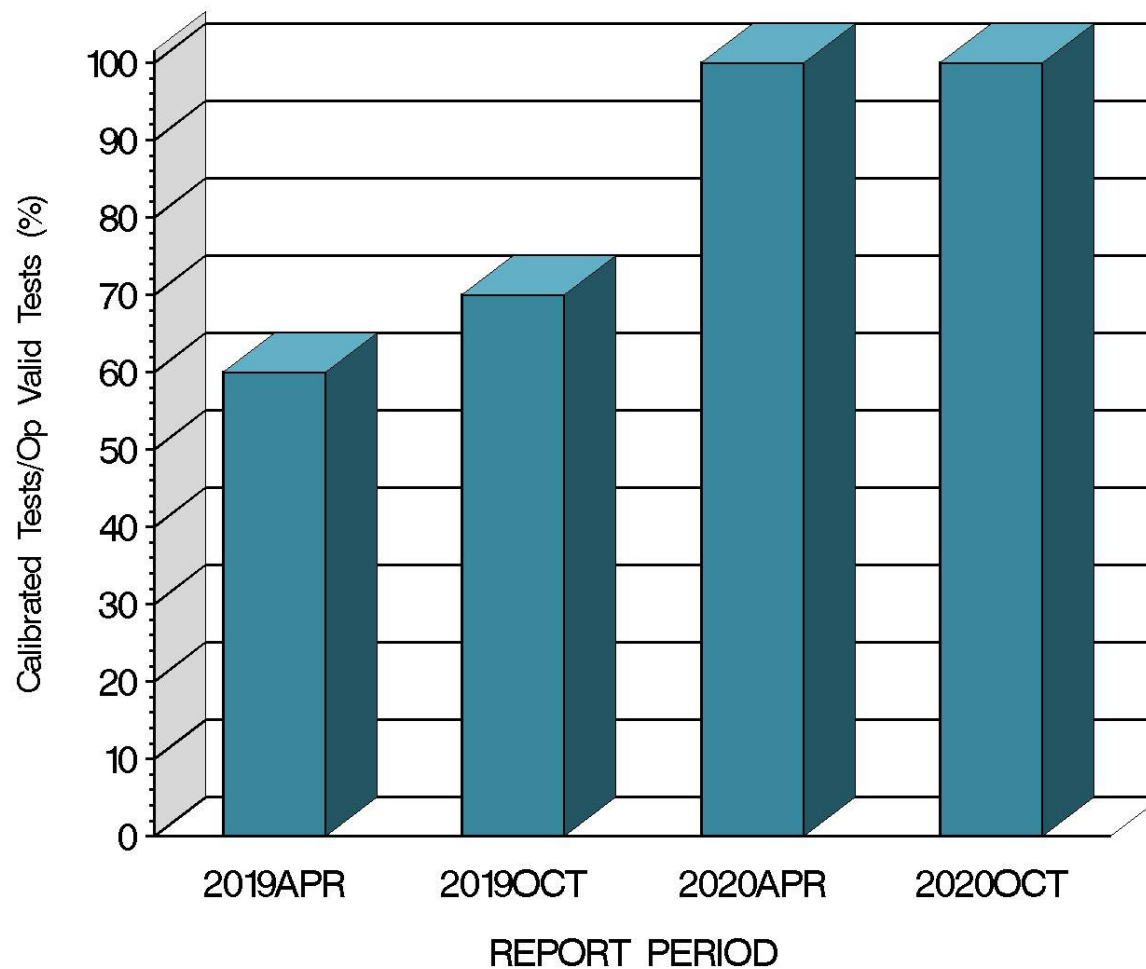
<http://astmtmc.cmu.edu>



A Program of ASTM International

L-33-1 (D7038)

OPERATIONALLY VALID TESTS
MEETING ACCEPTANCE CRITERIA



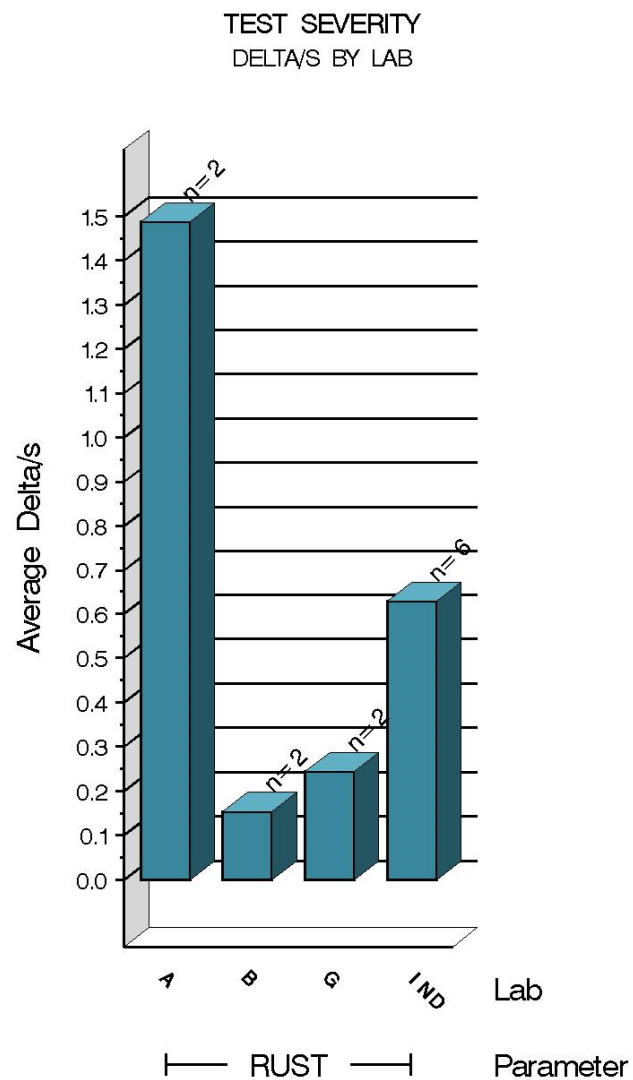
8:06:36 08OCT2020

L-33-1 (D7038)

CAUSES FOR LOST TESTS

		Oil			Validity			Loss Rate		
Lab	Cause	123-2	155	155-1	RC	LC	XC	Lost	Starts	%
	No tests were lost this period							0	11	0
	Lost	0	0	0	0	0	0			
	Starts	6	0	5	11	11	11			
	%	0%	0%	0%	0%	0%	0%			

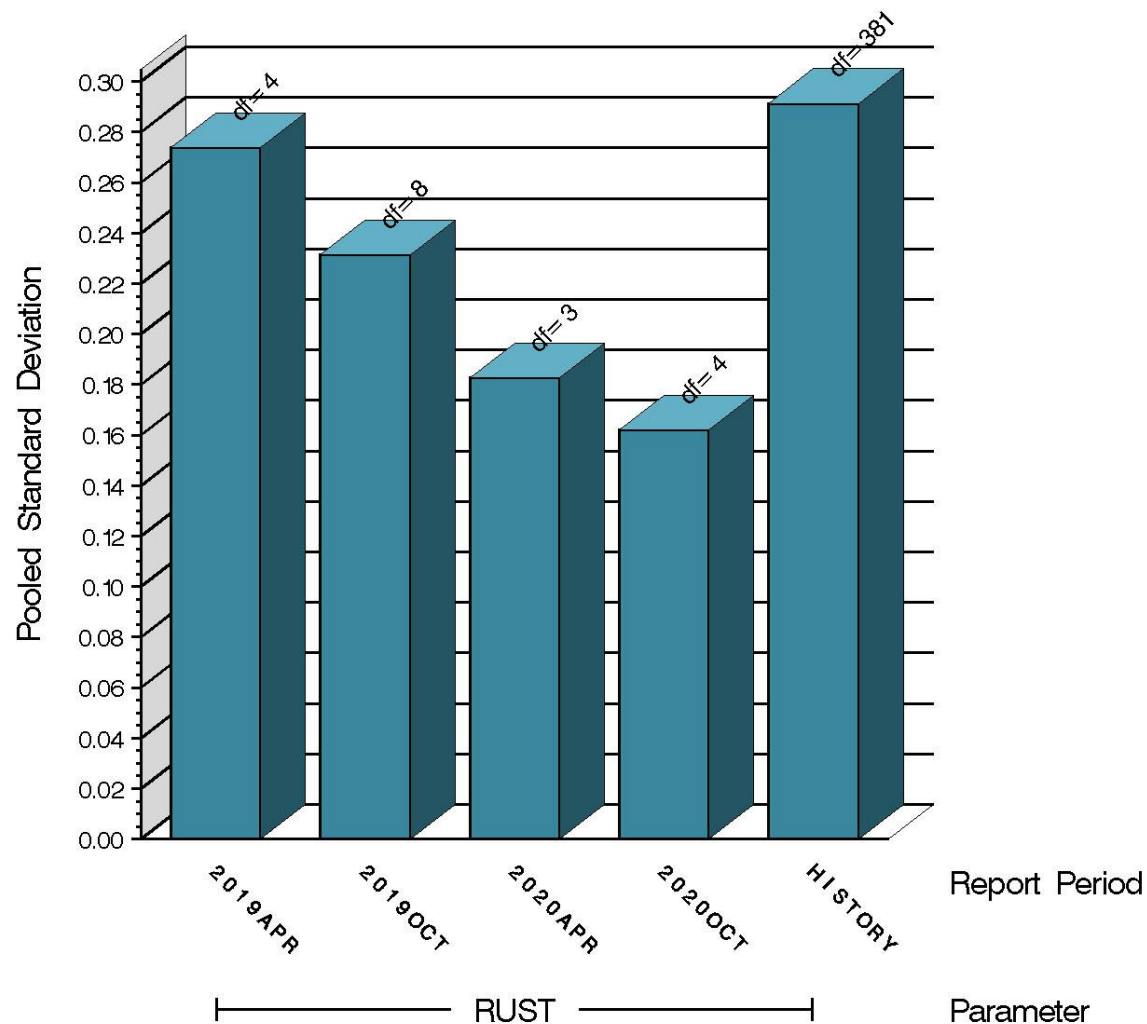
L-33-1 (D7038)



Average Δ/s by Lab		
Lab	N	RUST
A	2	1.487
B	2	0.154
G	2	0.244
Industry	6	0.628
Shift	6	0.157 merits

L-33-1 (D7038)

TEST PRECISION
POOLED STANDARD DEVIATION
BY SIX-MONTH ASTM REPORT PERIOD



8:06:36 08OCT2020

L-33-1 (D7038)

SUMMARY OF SEVERITY & PRECISION

Severity
The reporting period started by exceeding the severity action limit in the mild direction, but has returned within limits with the most recent test.
Precision
The precision action limit was not exceeded during this period.

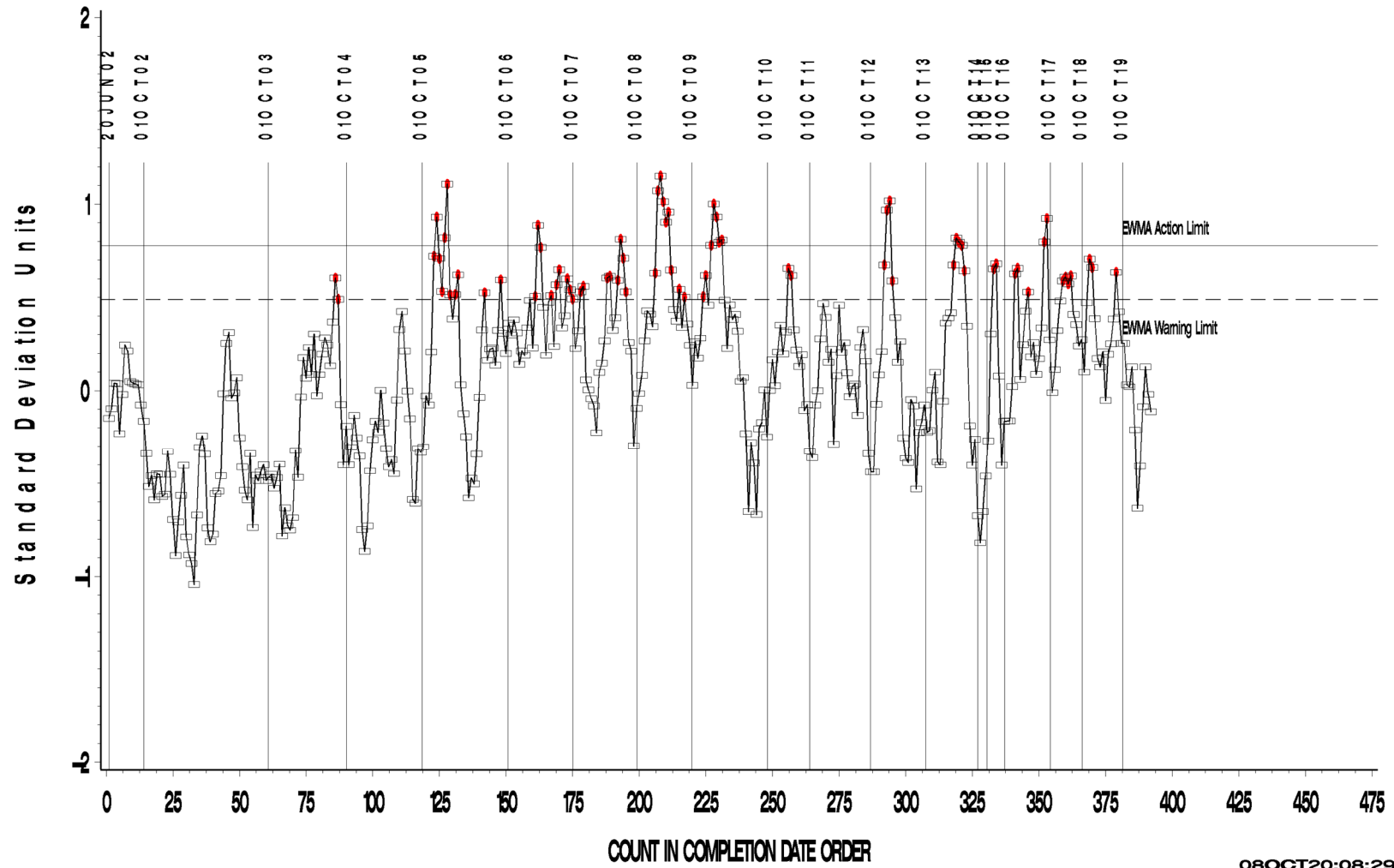
Industry control charts follow.

L-33-1 (D7038)

L-33-1 INDUSTRY OPERATIONALLY VALID DATA

FINAL RUST RESULT

LTMS Precision Analysis



08OCT20:08:29

Test Monitoring Center

<http://astmtmc.cmu.edu>



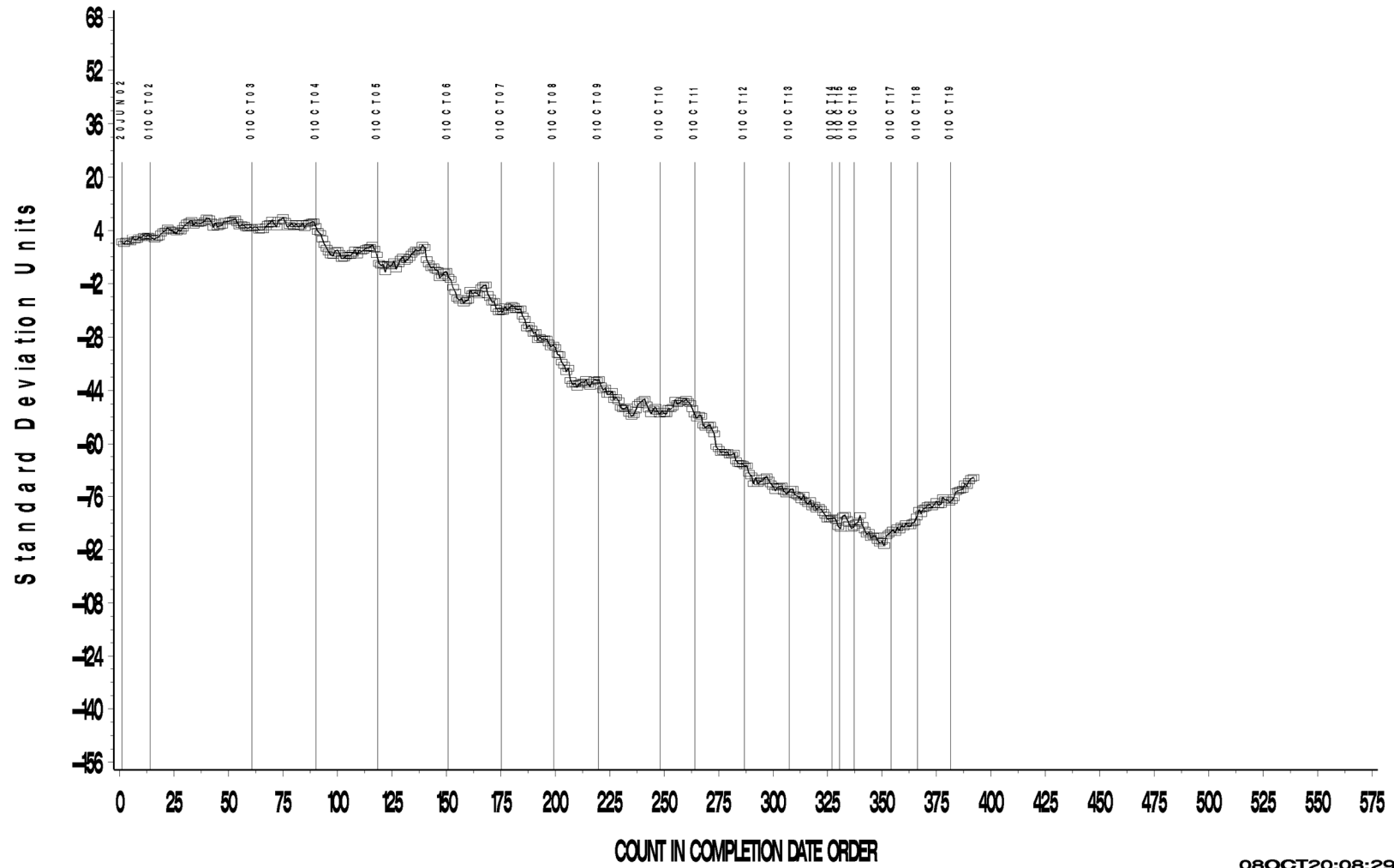
A Program of ASTM International

L-33-1 (D7038)

L-33-1 INDUSTRY OPERATIONALLY VALID DATA

FINAL RUST RESULT

CUSUM Severity Analysis



08OCT20:08:29

Test Monitoring Center
<http://astmtmc.cmu.edu>



L-33-1 (D7038)

TIMELINE ADDITIONS

Effective Date	Information Letter	Event
October 15, 2020	Report Packet Revision Notice L-331-20200916	Effective date of report packet revision is after the reporting period. Forms 4, 4A, and 4B of the test report were modified to allow for three digits to be inputted into the test hours field.

L-33-1 (D7038)

LAB VISITS

No lab visits were conducted during this reporting period.

INFORMATION LETTERS

No information letters were issued during this period.

L-33-1 (D7038)

STATUS OF REFERENCE OIL SUPPLY

		@ TMC	
Oil	Cans @ Labs	Cans	Gallons
123-2	14	86	86.0
155	0	27	27.5
155-1	16	49	49.8
Total	30	162	163.3

The TMC quantity remaining presumes usage only for L-33-1 testing. Oil 155/155-1 is also used in other test areas (L-37, L-37-1, L-60-1, and HTCT).