


MEMORANDUM: 11-066

DATE: December 13, 2011

TO: Thomas D. Gottwald, Acting Chairman, L-42 Surveillance Panel

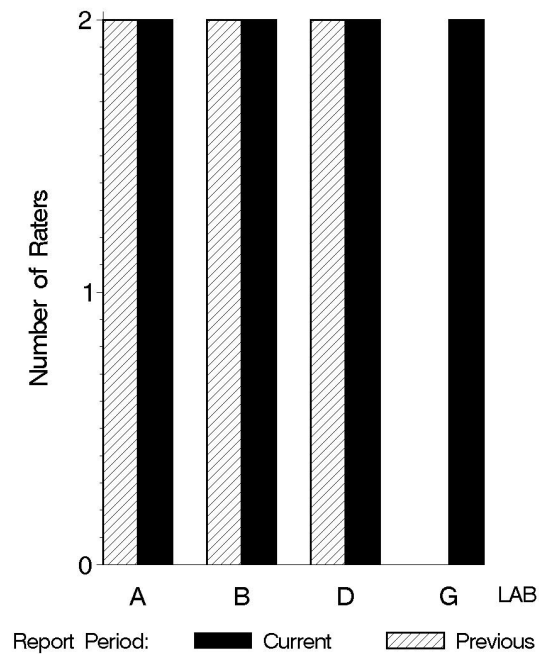
FROM: Scott Parke 

SUBJECT: L-42 Rater Calibration from October 1, 2010 through March 31, 2011

The following is a summary of L-42 rater calibration activity from October 1, 2010 through March 31, 2011.

	Reporting Data	Calibrated on 3-31-2011
Number of Raters	8	7

## BY-LAB RATER DISTRIBUTION

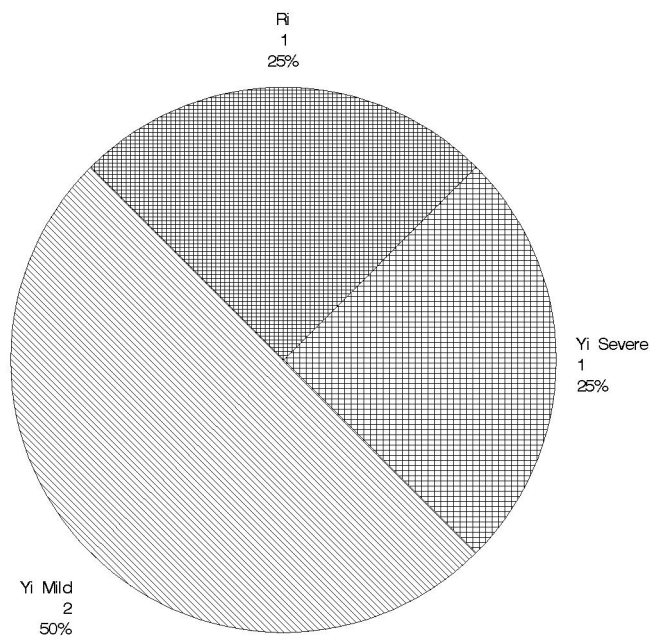


**Test Distribution by Oil and Validity**

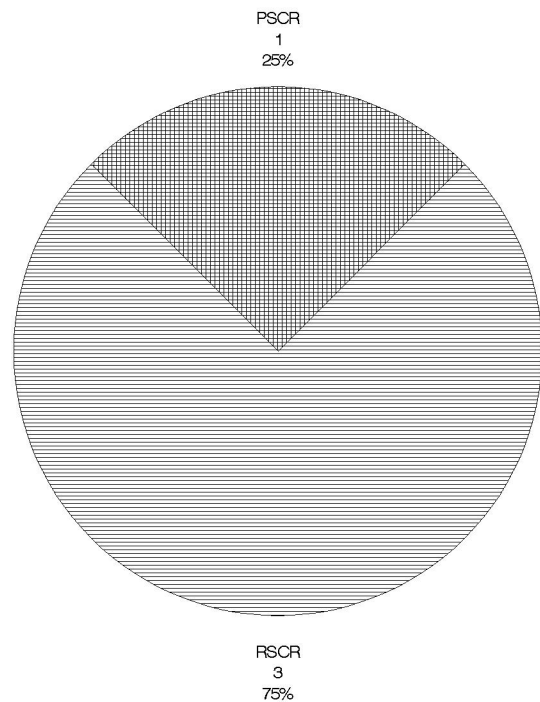
		Totals	
		Last Period	This Period
Accepted for calibration	AC	6	8
Rejected (mild)	OC	0	2
Rejected (severe)	OC	0	1
Rejected (multiple)	OC	0	0
Rejected (precision)	OC	0	1
Workshop data	AG	15	21
Total		21	33

**CAUSE OF REJECTED TESTS**

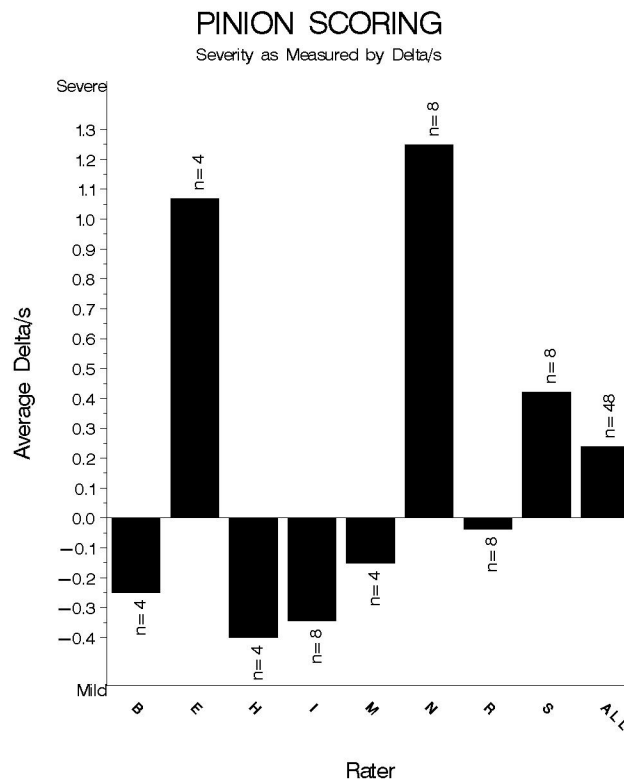
**DISTRIBUTION OF FAILING TESTS**  
(By Alarm Type)

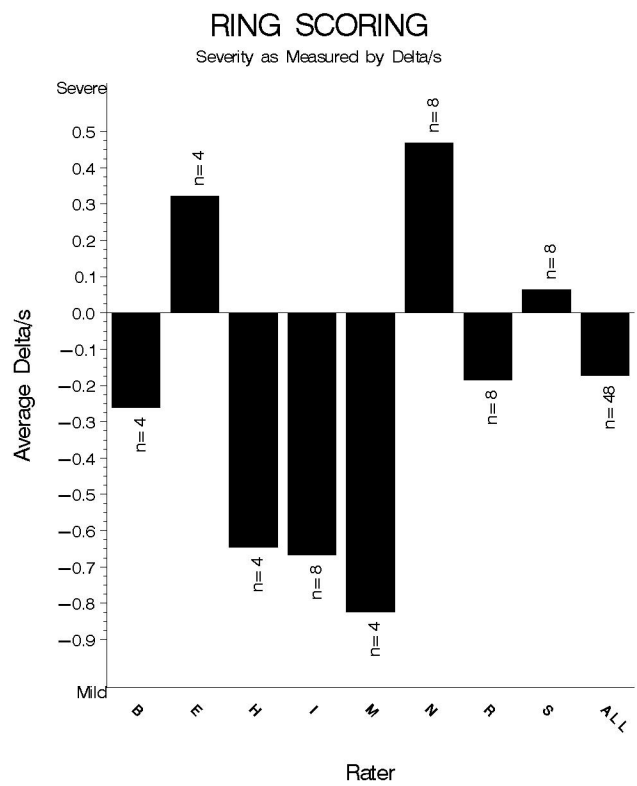


**DISTRIBUTION OF FAILING TESTS**  
(By Test Parameter)

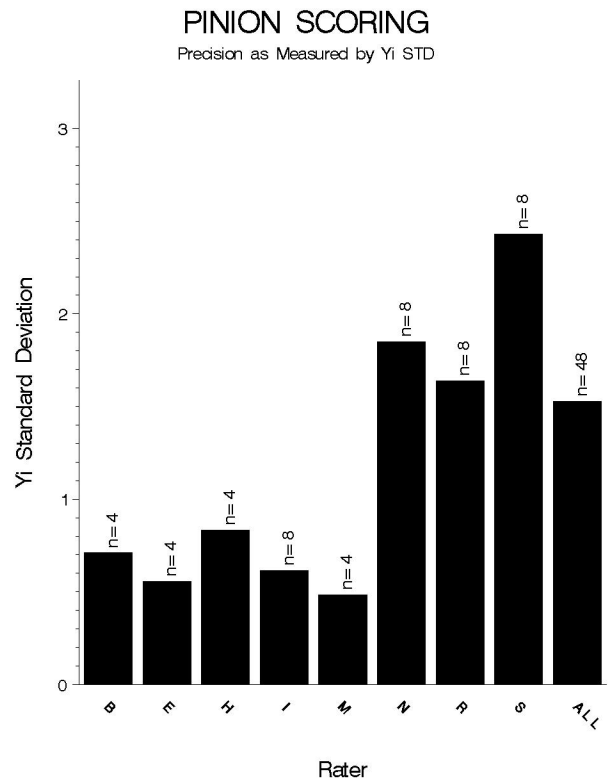


Rater	N	Pinion Scoring		Ring Scoring	
		Avg Yi	STD*	Avg Yi	STD*
B	4	-0.247	0.707	-0.259	0.526
E	4	1.067	0.553	0.319	1.360
H	4	-0.398	0.830	-0.644	0.862
I	8	-0.342	0.612	-0.665	0.732
M	4	-0.149	0.482	-0.823	0.377
N	8	1.247	1.845	0.466	1.015
R	8	-0.035	1.636	-0.183	1.769
S	8	0.420	2.428	0.063	2.039
ALL	48	0.238	1.524	-0.170	1.307

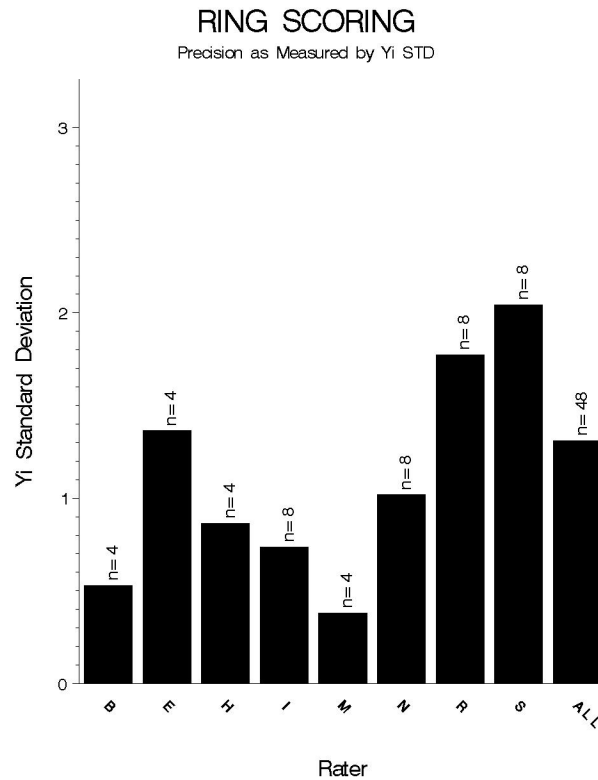




11/31/05 13DEC2011



11/31/05 13DEC2011



11/31/05 13DEC2011

### INDUSTRY CONTROL CHARTS:

The industry control charts are shown beginning on the following page.

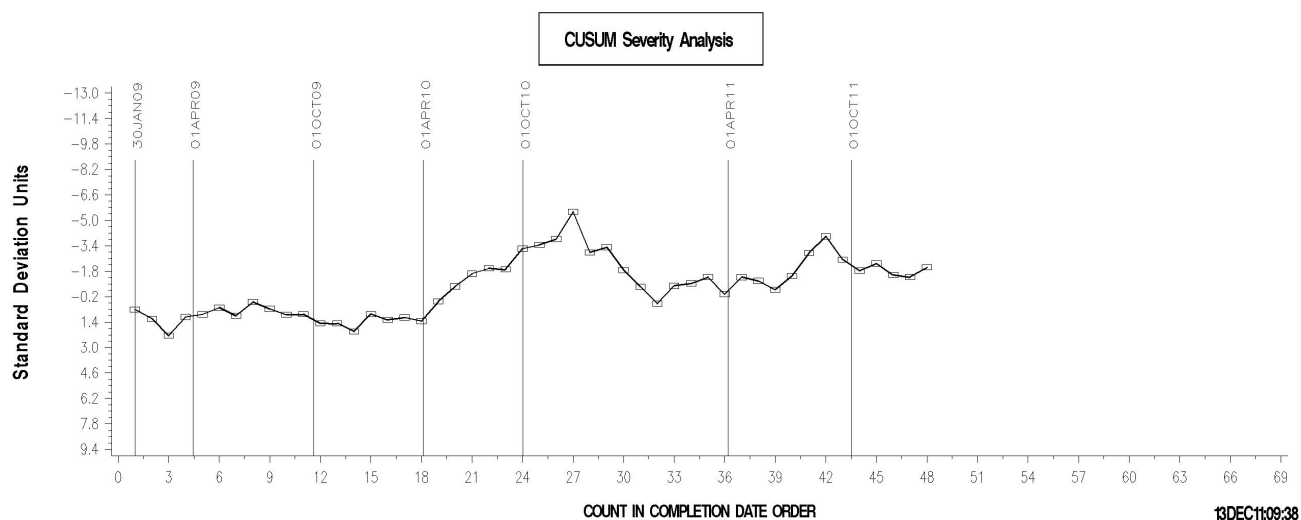
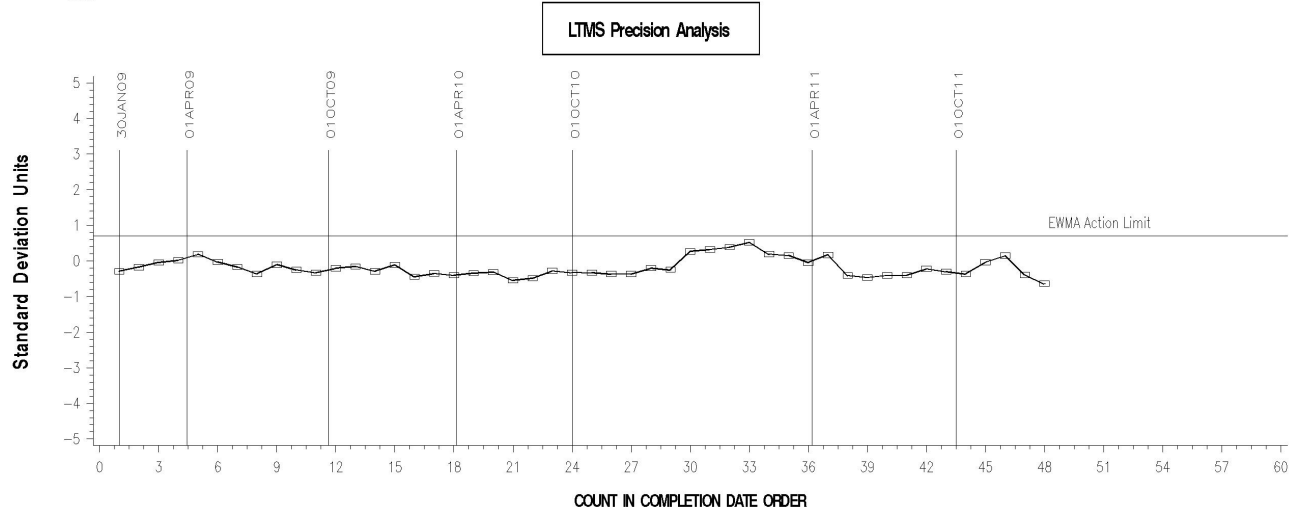
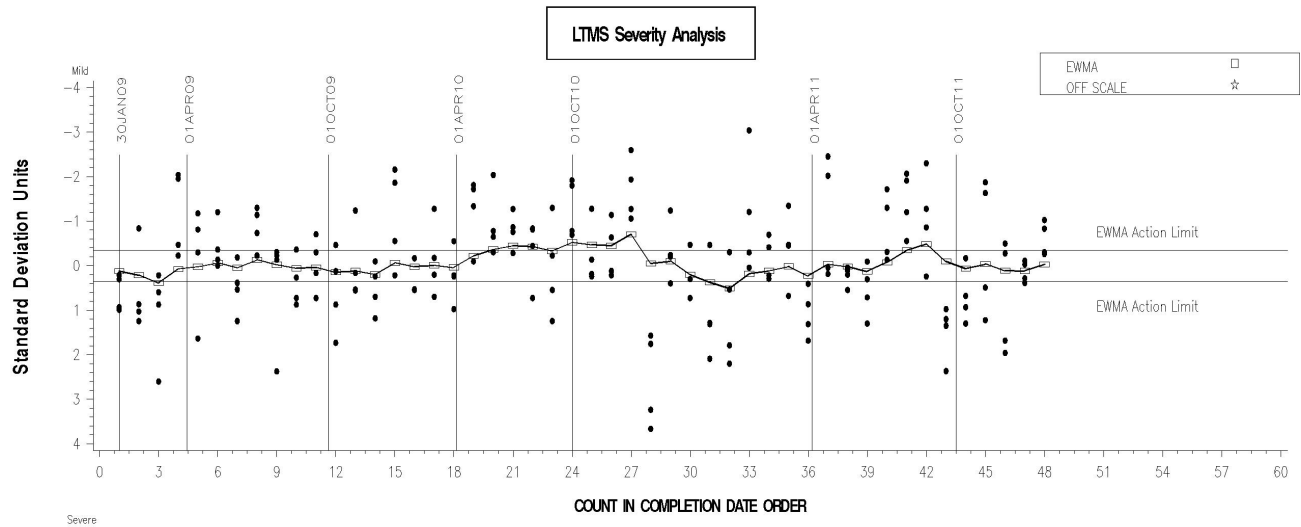
PSCR began the report period exceeding the mild action limit but came back within limits after the first three tests. PSCR remained within limits throughout the remainder of the period with the exception of one test midway through the period. RSCR also began the period exceeding the mild action limit but came within limits on the fourth test and stayed there for the remainder of the period.

Precision performance for both ring and pinion scoring remained within acceptable limits.

## L-42 RATER CALIBRATION INDUSTRY OPERATIONALLY VALID DATA



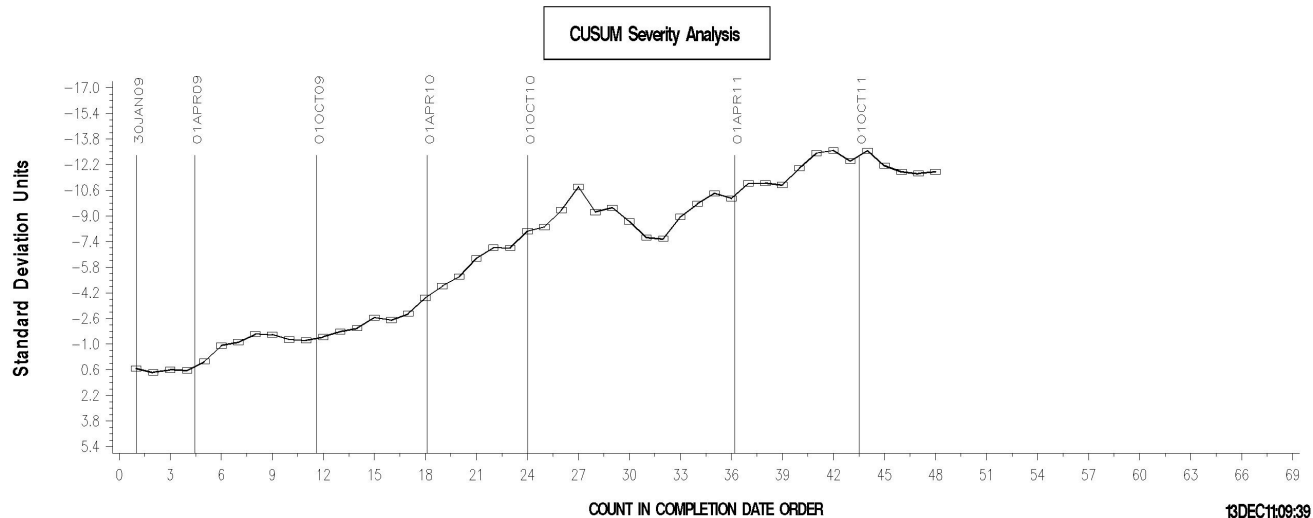
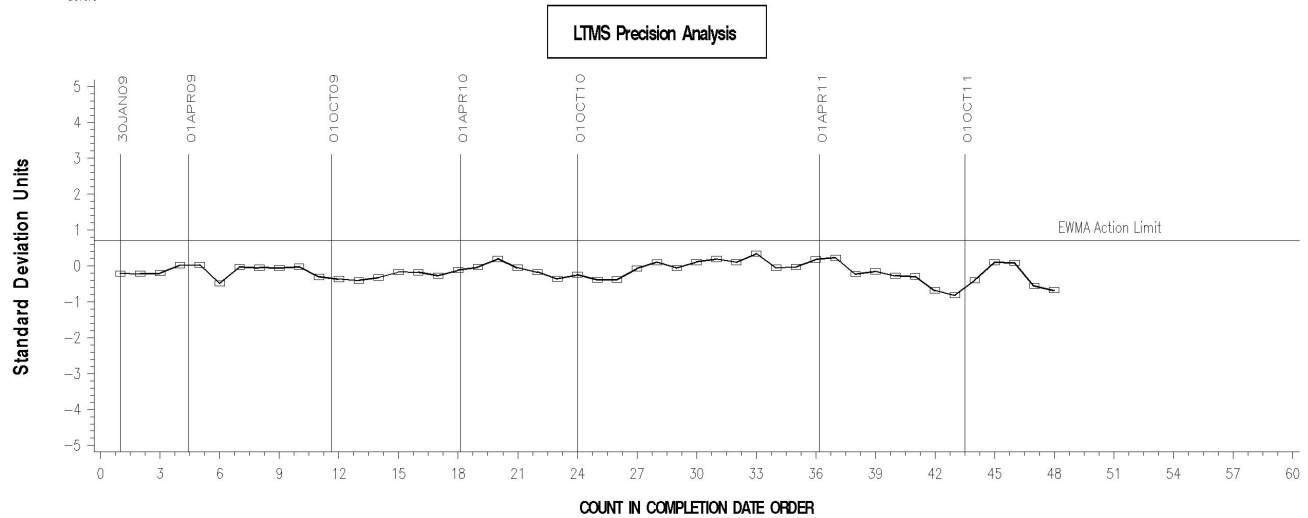
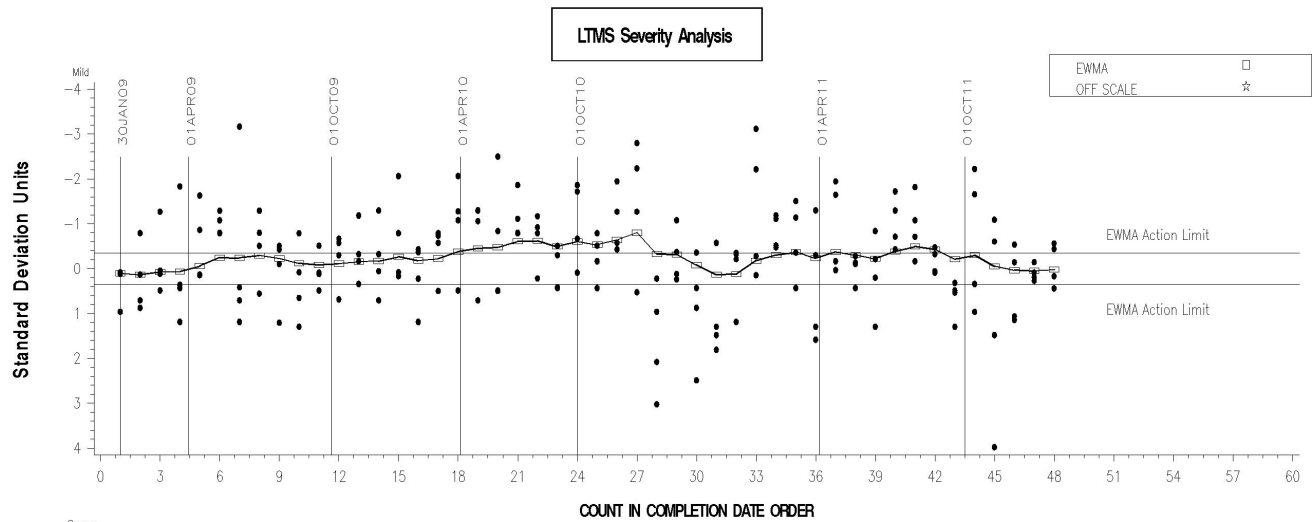
## PINION SCORING



## L-42 RATER CALIBRATION INDUSTRY OPERATIONALLY VALID DATA



## RING SCORING



Memo 11-066

Page 8

SDP/sdp/mem11-066.sdp.docx

cc: Frank Farber

Jeff Clark

L42 Surveillance Panel

<ftp://ftp.astmtmc.cmu.edu/docs/gears/l42rc/semiannualreports/l42rc-04-2011.pdf>

Distribution: email