
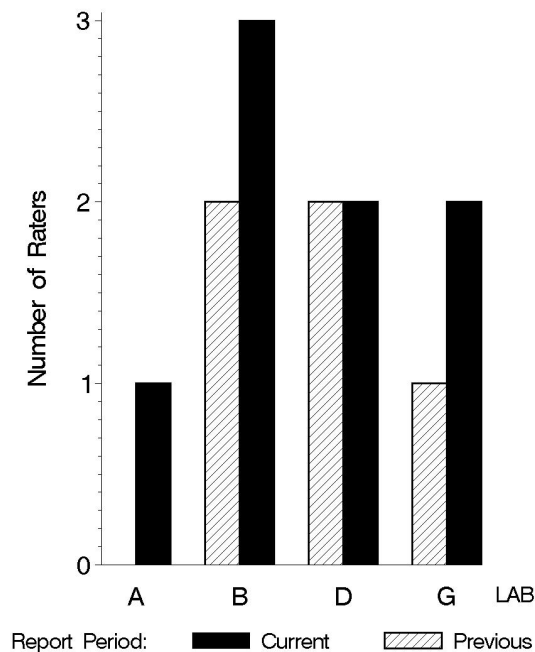


MEMORANDUM: 12-024
 DATE: June 12, 2012
 TO: Thomas D. Gottwald, Chairman, L-42 Surveillance Panel
 FROM: Scott Parke 
 SUBJECT: L-42 Rater Calibration from October 1, 2011 through March 31, 2012

The following is a summary of L-42 rater calibration activity from October 1, 2011 through March 31, 2012.

	Reporting Data	Calibrated on 3-31-2012
Number of Raters	8	7

BY-LAB RATER DISTRIBUTION

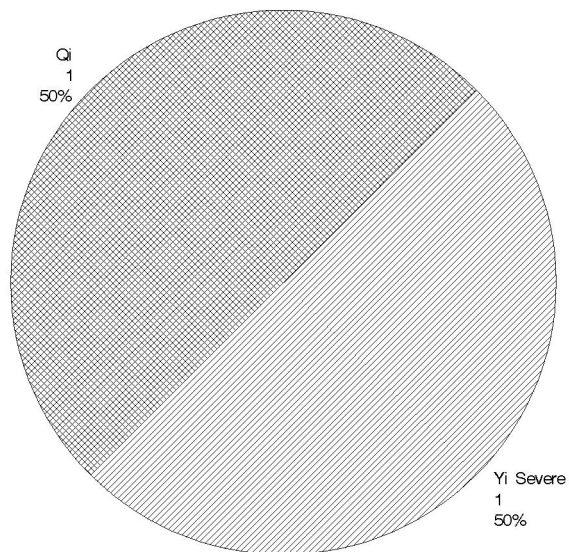


Test Distribution by Oil and Validity

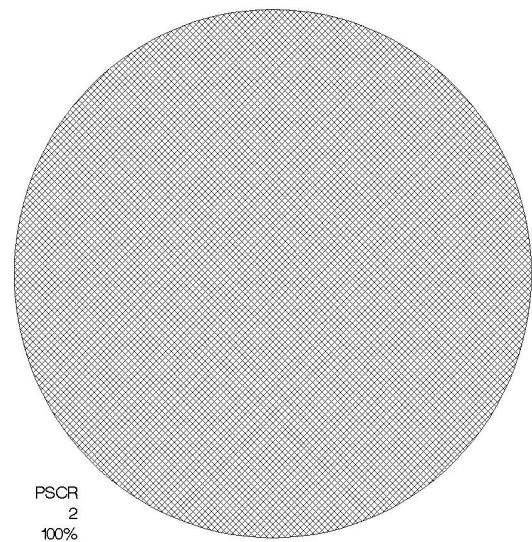
		Totals	
		Last Period	This Period
Accepted for calibration	AC	5	12
Rejected (mild)	OC	1	0
Rejected (severe)	OC	1	1
Rejected (multiple)	OC	0	0
Rejected (precision)	OC	0	1
Workshop data	AG	18	24
Total		25	38

CAUSE OF REJECTED TESTS

DISTRIBUTION OF FAILING TESTS
(By Alarm Type)

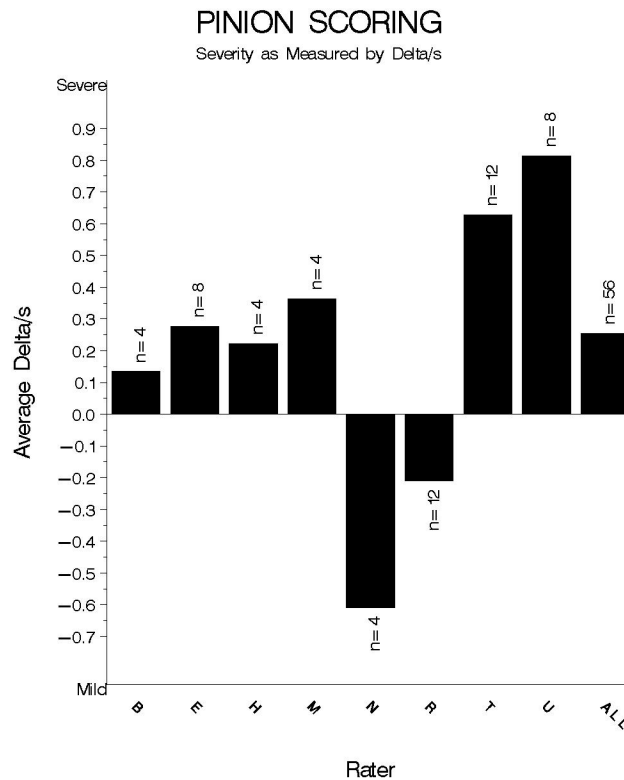


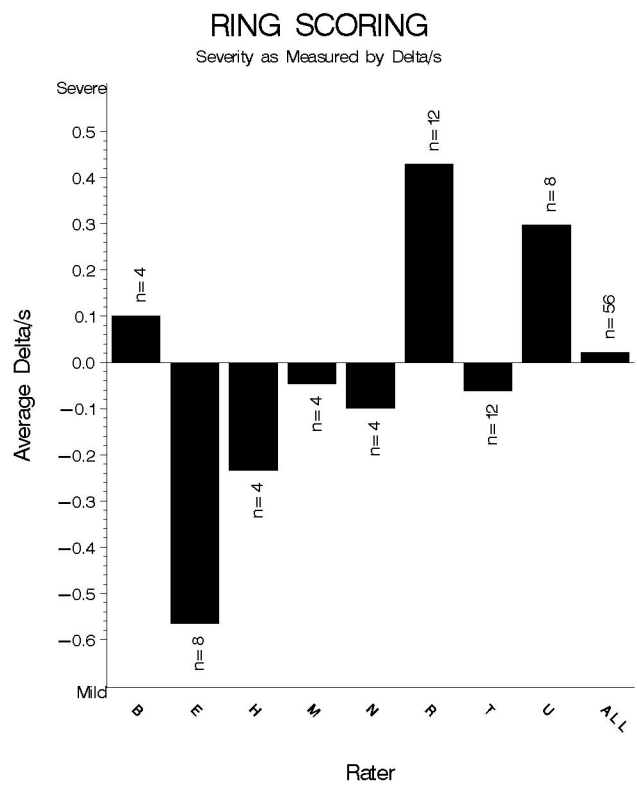
DISTRIBUTION OF FAILING TESTS
(By Test Parameter)



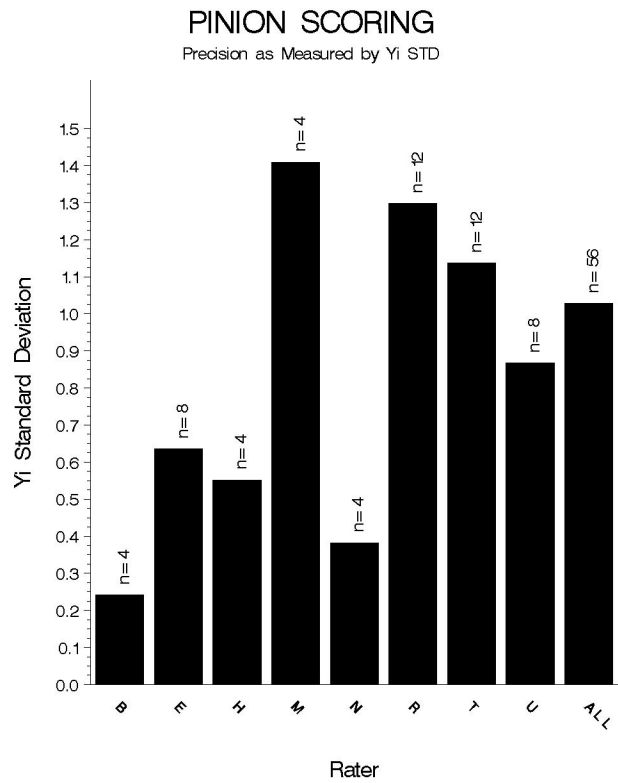
Rater	N	Pinion Scoring		Ring Scoring	
		Avg Yi	STD*	Avg Yi	STD*
B	4	0.133	0.240	0.099	0.180
E	8	0.274	0.634	-0.564	1.043
H	4	0.221	0.550	-0.232	0.833
M	4	0.362	1.408	-0.045	1.360
N	4	-0.607	0.380	-0.098	0.479
R	12	-0.208	1.296	0.428	1.358
T	12	0.626	1.135	-0.061	0.576
U	8	0.812	0.865	0.296	1.190
ALL	56	0.252	1.027	0.021	1.006

* Due to the small number of ratings per pinion, the standard deviation of the Yi values is given in place of a pooled standard deviation.

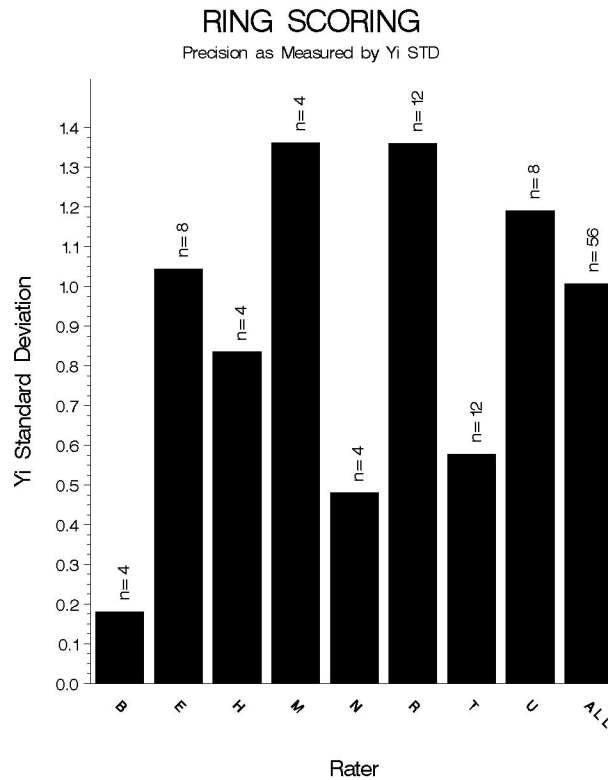




9/09/95 07JUN2012



9/09/95 07JUN2012



9/03/95 07JUN2012

INDUSTRY CONTROL CHARTS:

The industry control charts are shown beginning on the following page.

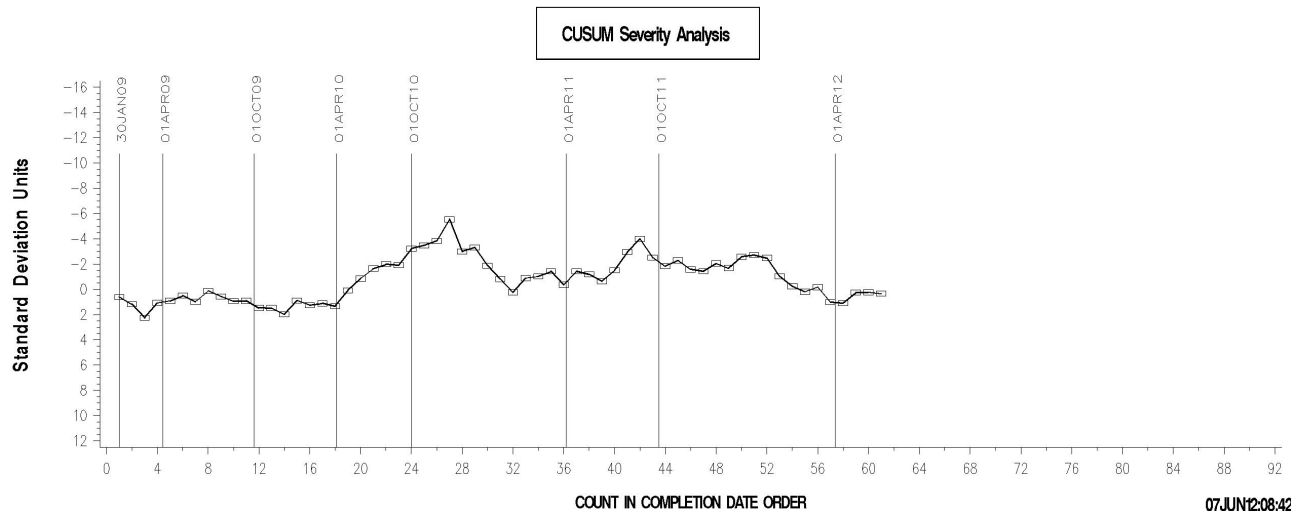
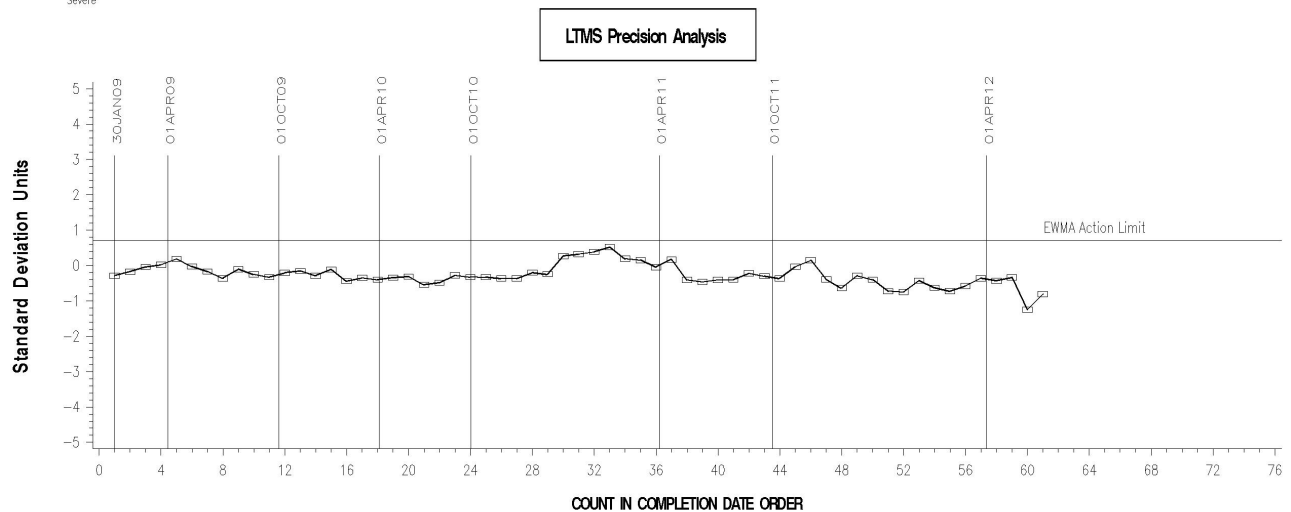
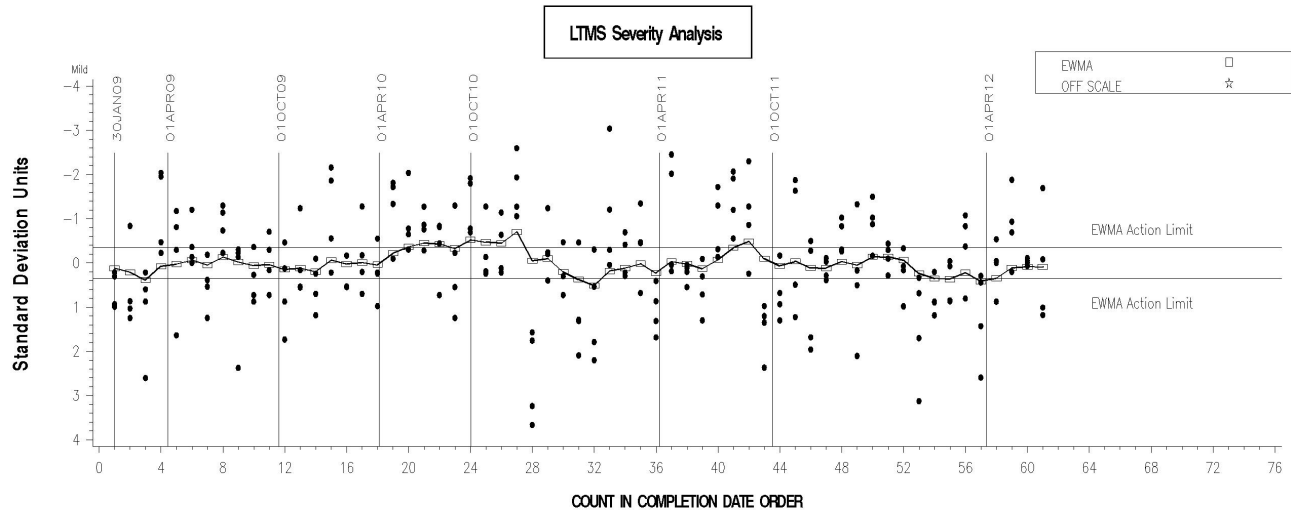
PSCR was on target for the first nine tests of the period before trending severe for the final five tests (testing after the close of the period has returned to target). RSCR was on-target throughout this period.

Precision performance for both ring and pinion scoring remained within acceptable limits.

L-42 RATER CALIBRATION INDUSTRY OPERATIONALLY VALID DATA



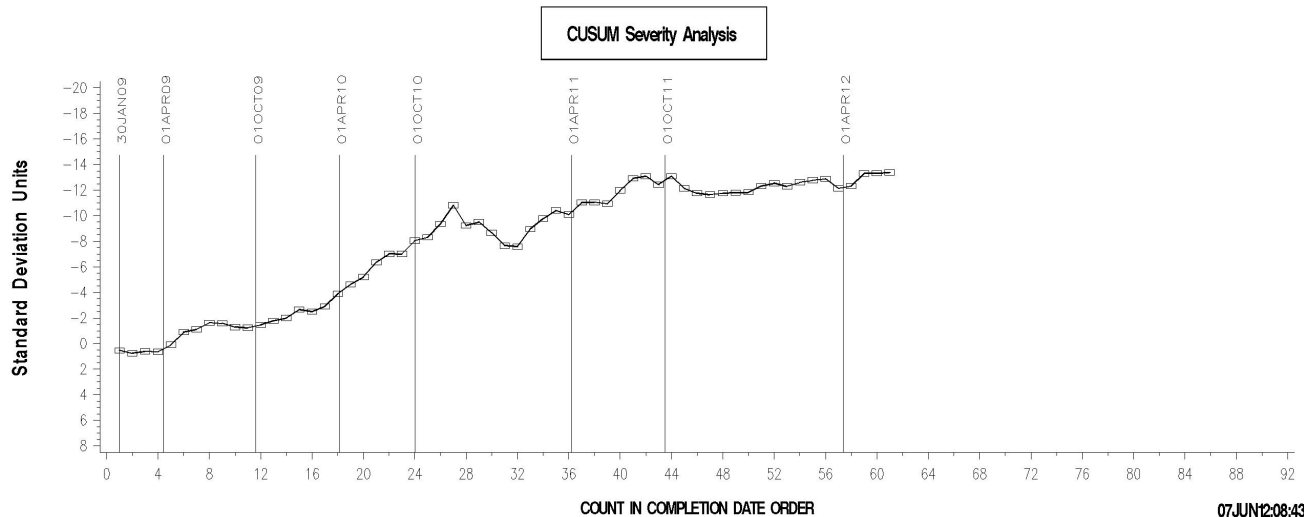
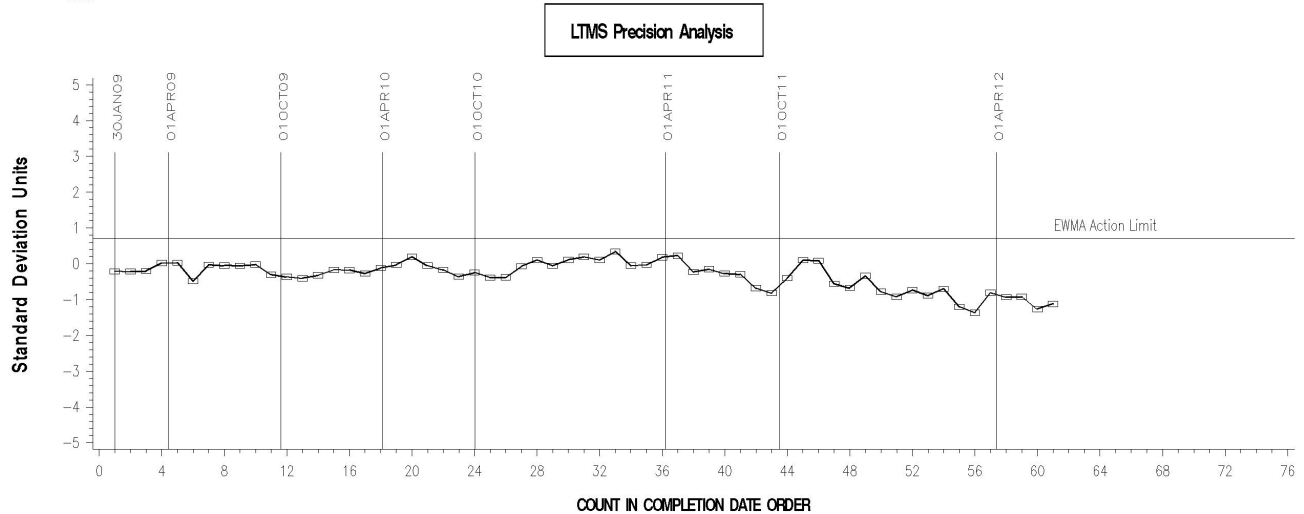
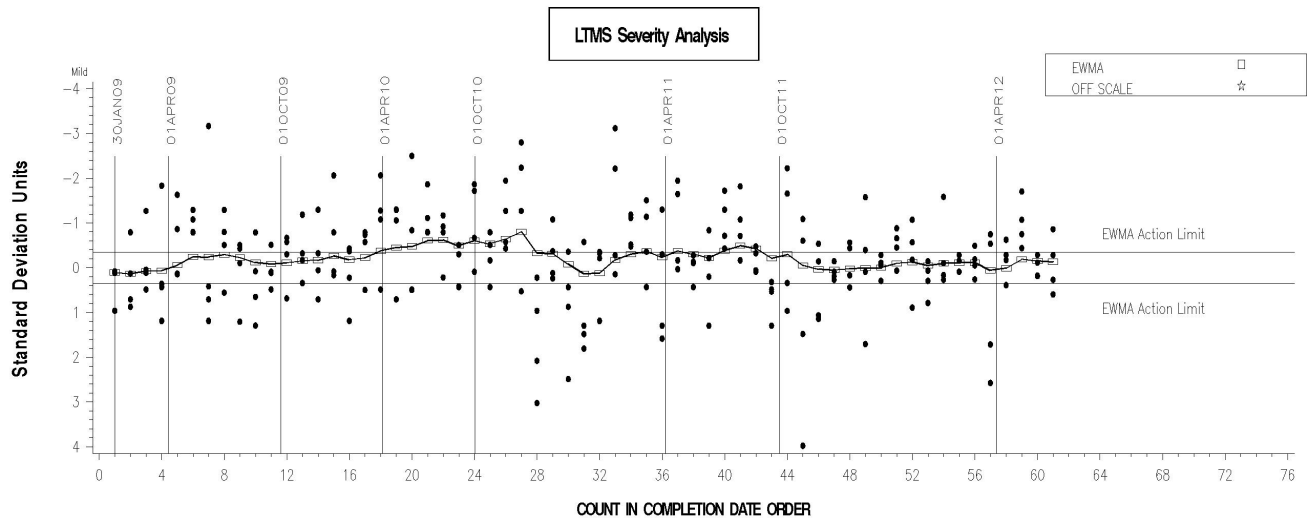
PINION SCORING



L-42 RATER CALIBRATION INDUSTRY OPERATIONALLY VALID DATA



RING SCORING



Memo 12-024

Page 8

SDP/sdp/mem12-024.sdp.docx

cc: Frank Farber

Jeff Clark

L42 Surveillance Panel

<ftp://ftp.astmtmc.cmu.edu/docs/gears/l42rc/semiannualreports/l42rc-04-2012.pdf>

Distribution: email